



Transplantation

Liver, Kidney, Heart



For many patients organ transplantation is the last resort. Maximum exposure and high quality surgical instruments are one of the key factors for best outcomes in those invasive procedures.

Transplantation Liver, Kidney, Heart

A guide to instrument selection

Nowadays transplantation plays a key role as an essential treatment method for saving and prolonging lives.

Enormous developments in transplant surgical techniques, organ preservation and preparation have evolved this method of treatment worldwide. Organs come either from deceased donors after brain death, or from live donations.



Table of Contents

	Pages
Feature, Function and Benefit	6-20
Kidney Transplantation	21-27
Liver Transplantation	28-33
Heart Transplantation	34-39

Feature, Function and Benefit



Aortic Punch

Anti reflection

Feature

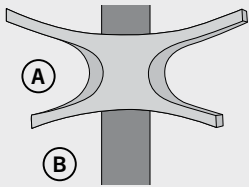
Benefit



- SolidBlack coating

- Longer service life of instrument

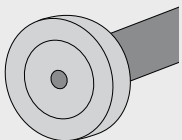
Ergonomic



- Shape of handle allows to position fingers at point A or point B

- Flexibility

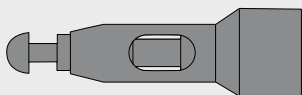
Reprocessing



- Luer connection

- Easy cleaning

Cleaning



- Locks in cleaning position

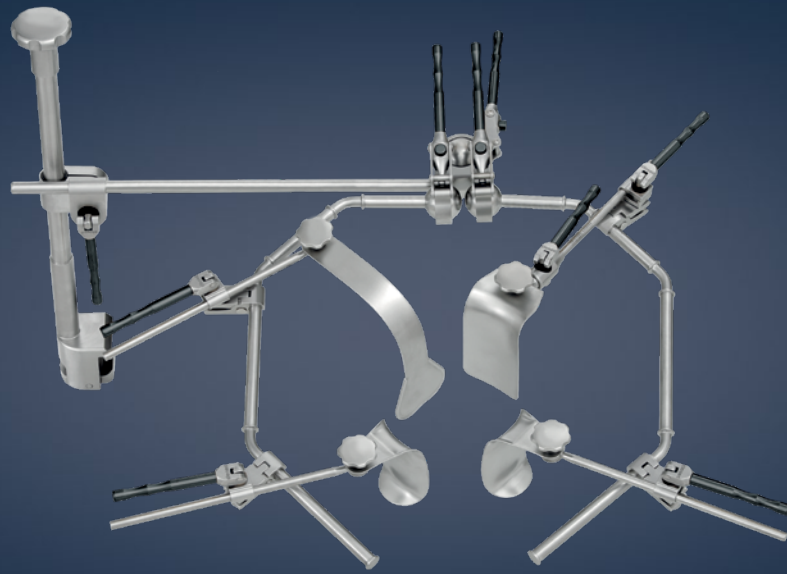
- Reproducible cleaning results

Cost comparison

- Long service life due to specialized shape of cutting tip + possibility for cleaning

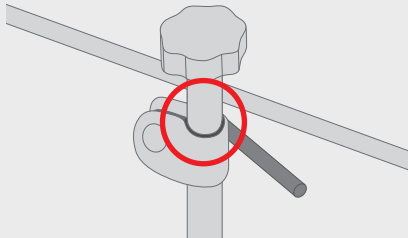
- Reusable instrument

Feature, Function and Benefit



marTract®

Electrical safety



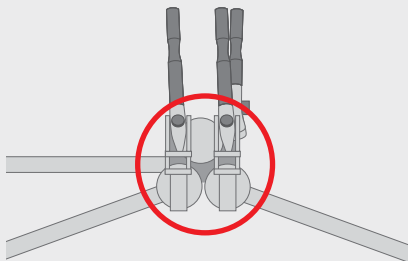
Feature

- The integrated insulation (black ring in the clamp)

Benefit

- Eliminates risk to the patient from high-frequency current leakage

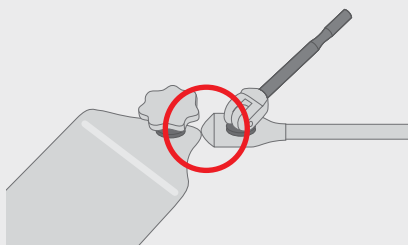
3-D adjustment



- Retainer with the three-ball joint brackets

- Ideal exposure in all situations

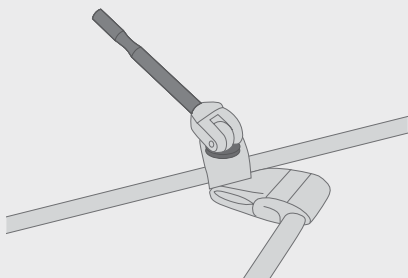
In-depth site setting



- Patented blade holders

- Ensure an optimal in-depth adjustment, tip-focused, incl. sideways and inwards moveable blades

Quick mounting / simple operation



- Soft clamps with eccentric closure

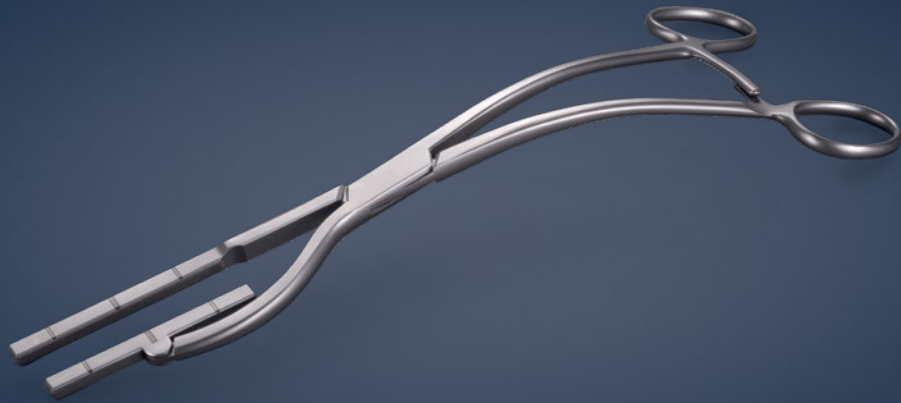
- Quick mounting by clicking and fast positioning

Reprocessing

- Disassembly possible

- Perfect adaption for cleaning and disinfection.

Feature, Function and Benefit



Kowalski Clamp

Toothing



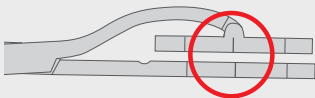
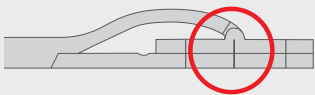
Feature

- DeBa key toothing

Benefit

- Atraumatic clamping

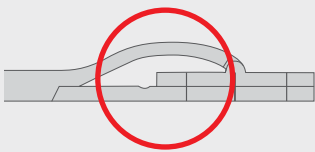
Parallel closing



- Specially designed working tips with articulation

- Parallel closure → steady pressure along the jaws

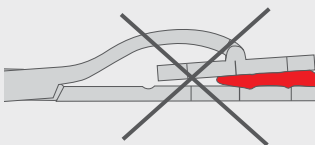
Handling



- Delicate and ergonomical design

- To allow ideal approach

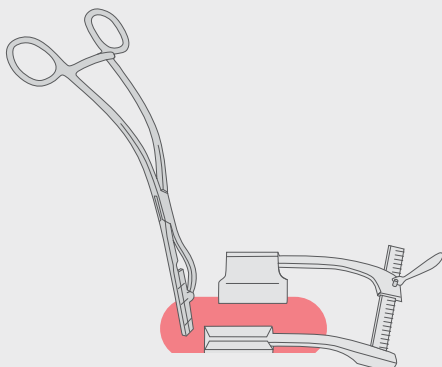
Positioning



- Marking for anatomical orientation

- Allows centered positioning for equal pressure distribution

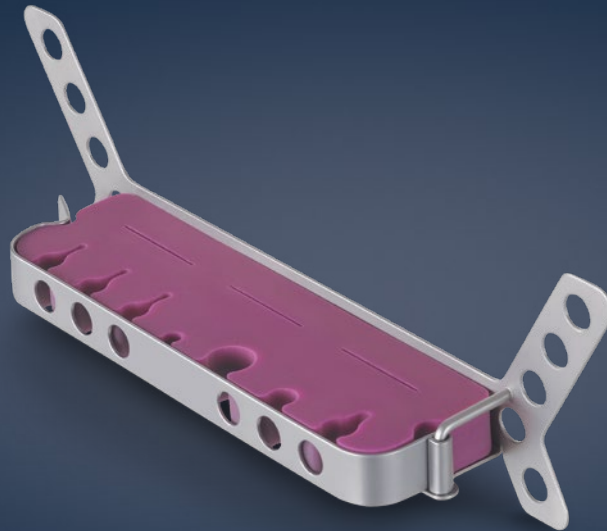
Design



- Curved handle

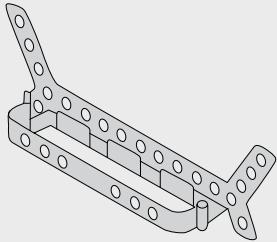
- For ideal vision

Feature, Function and Benefit



Tube Holder

Design



Feature

- Special design of holding device

Benefit

- Stable and light-weight

Flexibility



Adults



Adults



Children



Infants

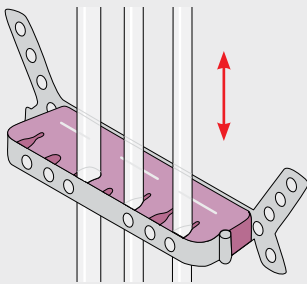


Neonates

- Five different color-coded inlays

- Flexibility for patient specific tube sizes

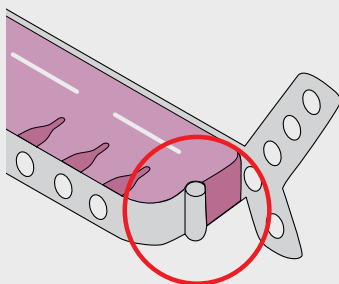
Security



- Flexible silicone inlays

- Constant flow rate

Simply simple



- Flap-lock

- Easy handling and exchange of inlays

Feature, Function and Benefit

nonStick red



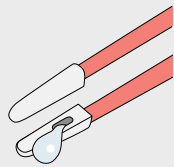
nonStick flush

EHT – **electrohydrothermosation** – an effective nonStick method in electrosurgery

The "**Neptun**" current type of the maxium® HF generator was developed specifically for fluid-assisted HF coagulation (**EHT = electrohydrothermosation**). This method has been well proven, especially in abdominal applications. This current type is specially tailored to the requirements of the nonStick flush bipolar irrigation forceps.

nonStick flush / nonStick red

Tissue adhesion



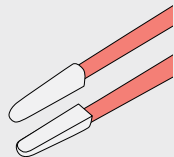
nonStick flush

Feature

- The irrigation openings are located right on the gripping surfaces

Benefit

- By irrigating the tissue adhesion is reduced

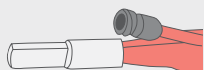


nonStick red

- Polished noble metal tips

- Reduces tissue sticking on the tips

Irrigation channel

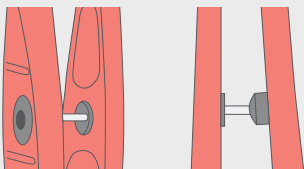


nonStick flush

- Integrated irrigation channel and irrigation connection

- The irrigation fluid is supplied via the Luer-Lock connection

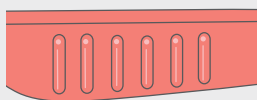
Guiding



- Guiding mechanism

- Highly parallel closure; prevents "tip spread"

Ergonomic



- Ergonomic marGrip structure

- Secure handling and effortless working

Simply simple



- Bipolar standard connector

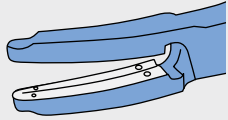
- In conjunction with the right connection cable, the forceps can be operated with all current HF generators

Feature, Function and Benefit



marClamp® Cut IQ

Multifunctional



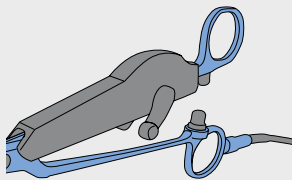
Feature

- Integrated blade for cutting

Benefit

- Reliable dissection, sealing and separation with just one instrument

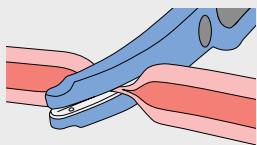
Ergonomic



- Lever for blade-moving

- Easy handling and reprocessing

Fast and safe



- Sealing the tissue

- Reproducible and fast sealing process for vessels up to 7 mm

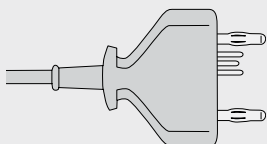
Cost comparison



- Reusable

- Substantial cost saving due to reusability and low proportion accounted for disposables

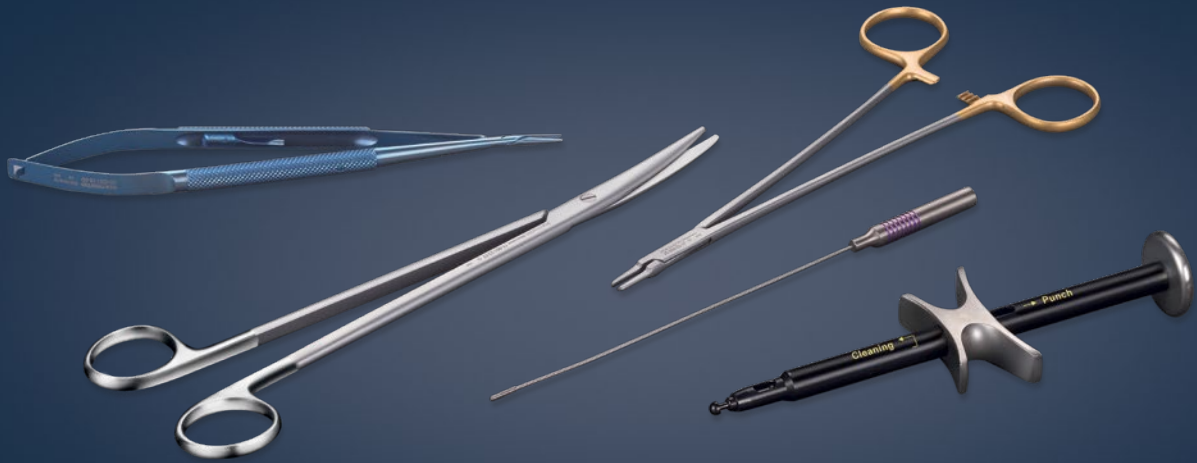
Plug and Play



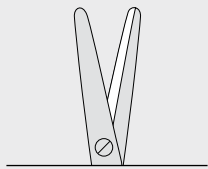
- IQ-connector

- Automatic identification of the instrument

Feature, Function and Benefit



Instrument characteristics

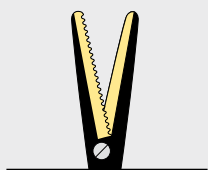


SuperCut

Scissor edge/knife edge



Titanium



TCCBlackLine

Tungsten carbide with
knife edge/serrated edge/
Solid Black coated



Solid Black
Hard-coated surface
(for extended life)



Nitinol
“memory effect”

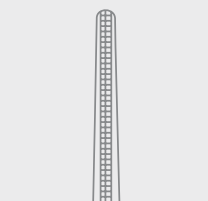
TCGOLD

Instruments with tungsten carbide inserts



diamond-coated

Diamond-coated working ends



Atrauma

Atraumatic serration



DeBakey
serration



DeBakey baby
serration



Cooley
serration

Indications

Instrument sets

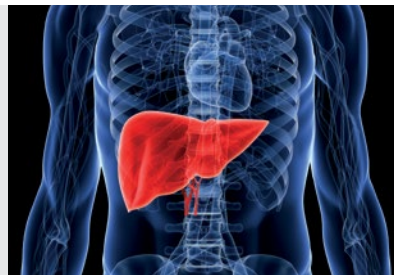
Kidney Transplantation

Pages 21-27



Liver Transplantation

Pages 28-33



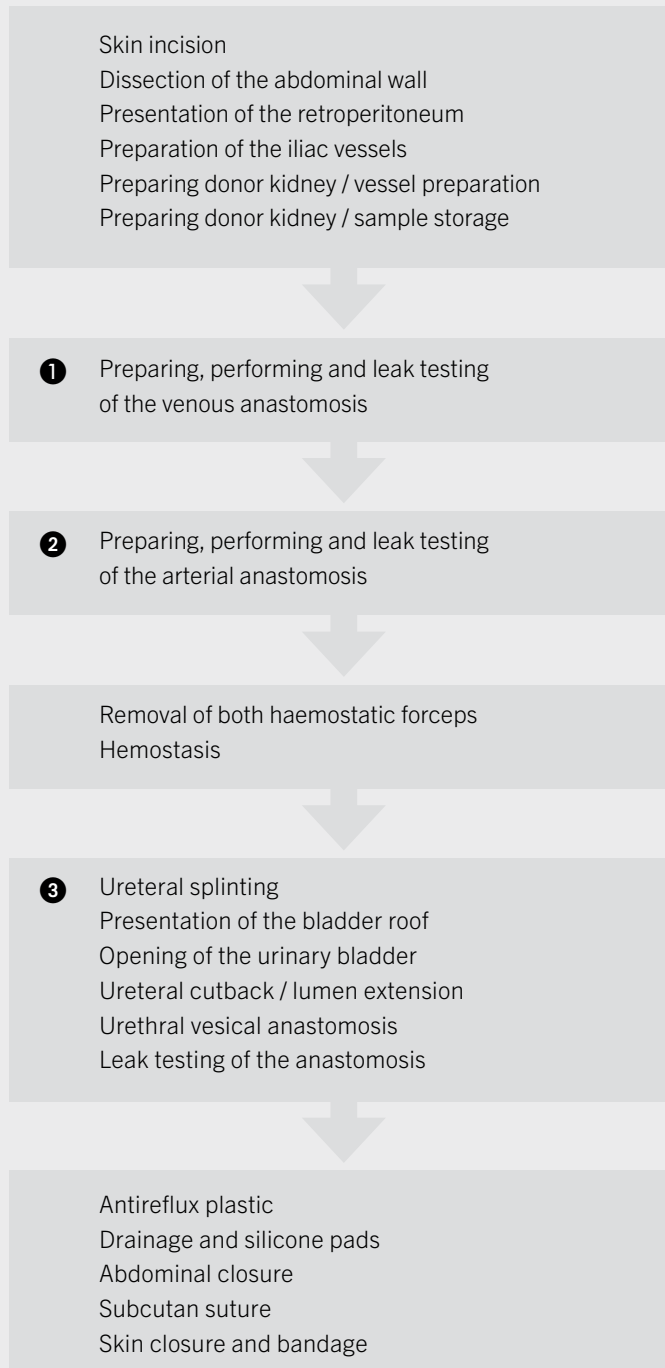
Heart Transplantation

Pages 34-39

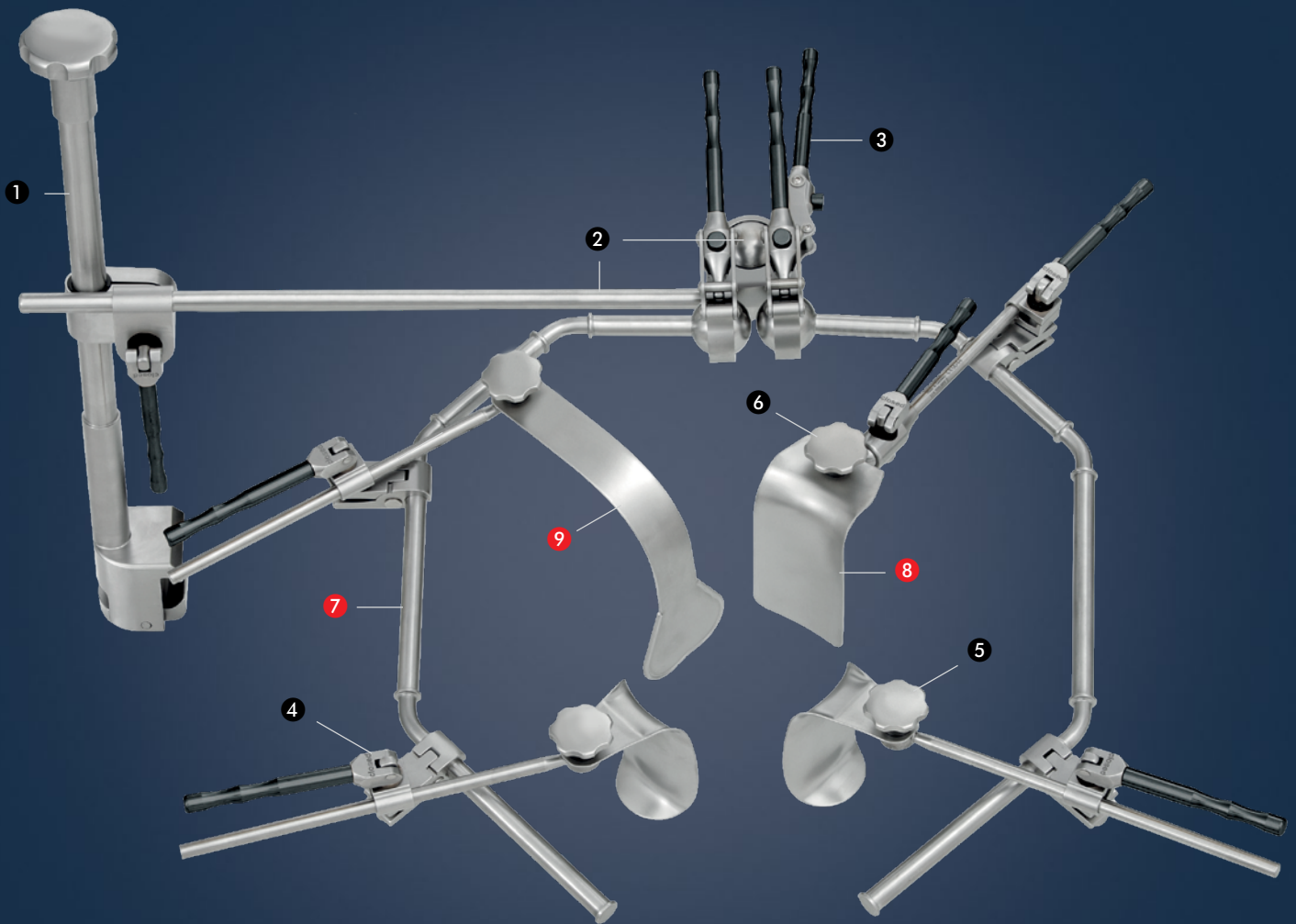




Kidney Transplantation



Kidney Transplantation



Kidney Transplantation

The kidney system consists of the standard frame and the extension for kidney.

15-924-00-04		marTract® frame standard consisting of	Qty.
15-920-10-07	❶	marTract® bracket, operating table	1
15-920-30-07	❷	marTract® transverse rod for 15-920-34-07	1
15-920-34-07	❸	marTract® ball mount for holding arms	1
15-920-22-07		marTract® holding arm, standard system	2
15-920-35-07	❹	marTract® fixing clip for retractor	6
15-920-40-07	❺	marTract® blade holder, fixed	3
15-920-42-07	❻	marTract® blade holder, movable	1

15-924-14-04		marTract® extension kidney consisting of	Qty.
15-920-21-07	❷	marTract® holding arm for kidney add-on	2
15-920-42-07		marTract® blade holder, movable	1
15-921-30-07		marTract® Kirschner, retractor, 65 x 50 mm	2
15-921-50-07		marTract® Langenbeck, blade, 90 x 40 mm	1
15-921-51-07		marTract® Langenbeck, blade, 150 x 50 mm	1
15-921-10-07	❸	marTract® blade, flexible, 160 x 50 mm	1
15-921-13-07		marTract® blade, flexible, 160 x 75 mm	1
15-922-31-07		marTract® Breisky, blade, 110 x 25 mm	1
15-922-32-07		marTract® Breisky, blade, 150 x 25 mm	1
15-922-33-07		marTract® Breisky, blade, 200 x 25 mm	1
15-922-10-07	❹	marTract® Harrington, blade, 175 x 50 mm	1
15-922-11-07		marTract® Harrington, blade, 175 x 65 mm	1
15-922-20-07		marTract® retractor, slotted, 125 x 50 mm	1

Kidney Transplantation



Instrument Set

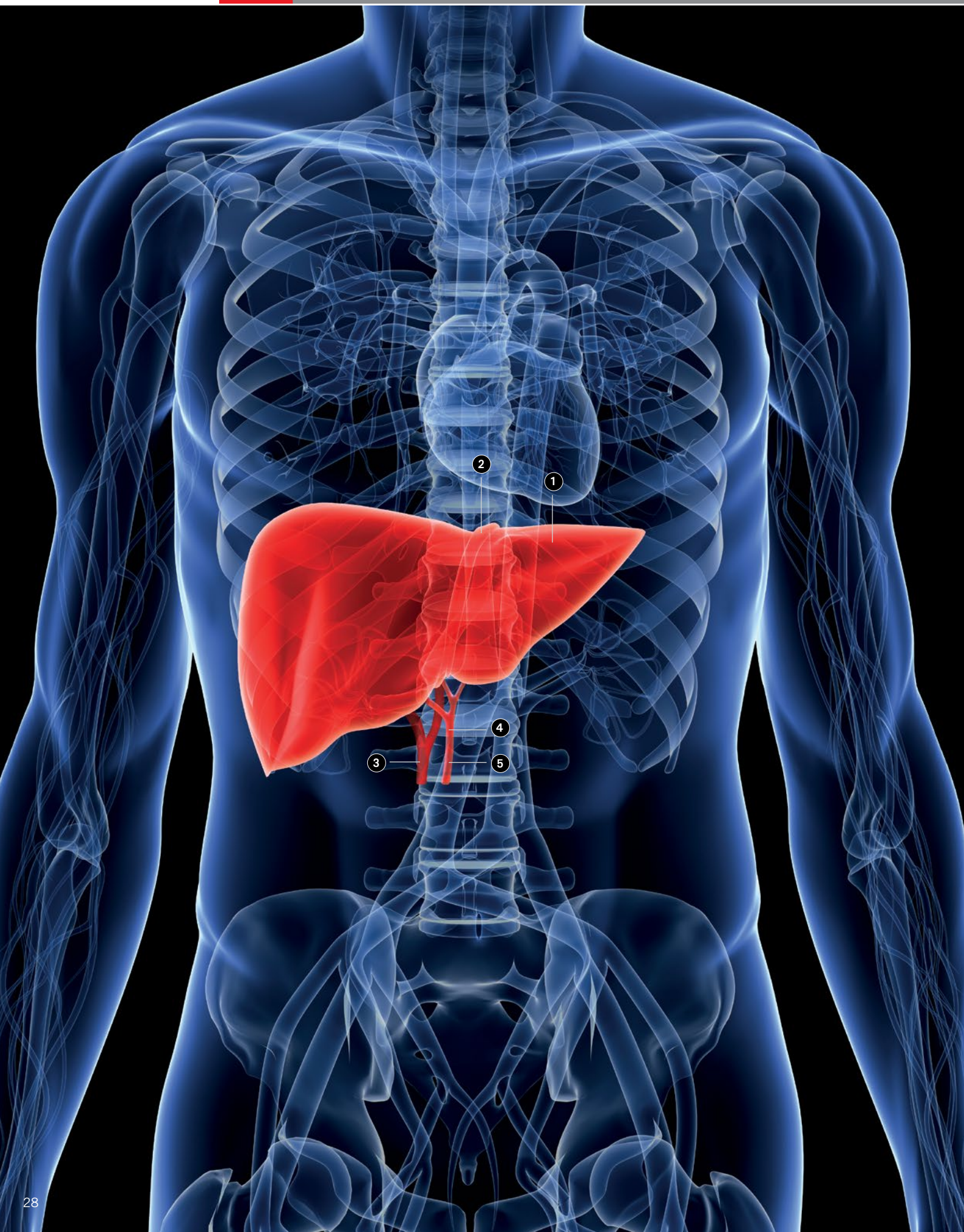
Reference	Description	Qty
10-100-04-07	Scalpel handle, No. 4, 13.5 cm	1
10-130-03-07	Scalpel handle, No. 3, 12 cm	1
10-199-00-01	Kling-Ex, scalpel blade remover	1
11-381-45-07	SC-Scissors, Dietrich-Potts, 10 mm, 45°, 18 cm	1
11-382-00-07	SC-Scissors, Dietrich-Potts, 10 mm, 125°, 18 cm	1
11-400-45-07	Coronary scissors, 45°, 10 mm, 18 cm	1
11-401-00-07	Coronary scissors, 125°, 10 mm, 18 cm	1
11-403-00-07	Coronary scissors, 125°, 7 mm, 18 cm	1
11-661-18-07	SC-Dissecting scissors, Metzenbaum, curved, 18 cm	1
11-671-15-07	SC-Scissors, Reynolds, curved, 15.5 cm	1
11-671-18-07	SC-Scissors, Reynolds, curved, 18 cm	1
11-911-23-07	TC-scissors, Mayo, curved, 23 cm	1
11-943-18-07	TC-dissecting scissors, curved, 17.5 cm	1
11-953-16-07	TC-scissors, Mayo-Lexer, curved, 16 cm	1
11-961-18-07	TC-dissecting scissors, fine, curved, 18 cm	1
11-961-23-07	TC-dissecting scissors, fine, curved, 23 cm	1
12-258-18-07	TC-dressing forceps, Potts-Smith, 18.5 cm	1
12-282-16-09	Ti-atraumatic forceps, 1.5 mm, 16 cm	1
12-467-23-07	Forceps, Resano, 23 cm	1
12-574-18-07	Ring forceps, straight, Ø 1.0 x 0.5 mm, 18 cm	1
12-574-21-07	Ring forceps, straight, Ø 1.0 x 0.5 mm, 21 cm	1
12-586-21-09	Ti-ring forceps, straight, 1.0 x 0.5 mm, 21 cm	1
12-590-18-09	Ti-atraumatic micro forceps, straight, 1.2 mm, 18 cm	1
12-624-12-07	Tying forceps, with plateau, 0.3 mm, 12 cm	1
13-121-08-07	Bulldog clamp, Diethrich, curved, 8 mm	2
13-121-10-07	Bulldog clamp, Diethrich, curved, 12 mm	2
13-121-12-07	Bulldog clamp, Diethrich, curved, 20 mm	2
13-122-20-07	Atraumatic Bulldog clamp, straight, 20 mm	2
13-125-20-07	Atraumatic Bulldog clamp, curved, 20 mm	2
13-266-25-07	Atraumatic organ seizing forceps, 25 cm	1
13-725-18-07	Peritoneal forceps, Mikulicz, 18.5 cm	4
16-100-18-01	Probe, button end, Ø 2.0/2.0 mm, 18 cm	1
20-010-18-07	Micro needleholder, straight, with lock, 18 cm	1
20-010-21-07	Micro needleholder, straight, with lock, 21 cm	1
20-020-18-09	Ti-micro needleholder, straight, with lock, 18 cm	1
20-030-18-07	Micro needleholder, straight, with lock, 1.2 mm, 18 cm	1
20-030-21-07	Micro needleholder, straight, with ock, 1.2 mm, 21 cm	1
20-620-18-07	TC-micro needleholder, straight, with lock, 18 cm	1
20-620-21-07	TC-micro needleholder, straight, with lock, 22	1
20-642-18-07	TC-needleholder, Mayo-Hegar, 18.5 cm	1
20-646-18-07	TC-needleholder, DeBakey, 18 cm	2
20-646-20-07	TC-needleholder, DeBakey, 20.5 cm	1
20-654-15-07	TC-needleholder, Ryder-vascular, 15.5 cm	1
20-654-18-07	TC-needleholder, Ryder-vascular, 17.5 cm	1
20-654-20-07	TC-needleholder, Ryder-vascular, 20 cm	1
24-156-03-07	Aortic punch, Ø 4.0 mm, 15 cm	1
24-156-05-07	Aortic punch, Ø 5.0 mm, 15 cm	1
24-281-45-09	Ti-shunt-Bulldog clamp, 45°, 12 CH, 70 mm	1

Reference	Description	Qty
24-288-07-09	Ti-Bulldog clamp, DeBakey, straight, 8 cm	2
24-297-11-07	Bulldog clamp, Gregory-soft, 11 cm	2
24-342-18-07	Atraumatic profunda clamp, Gregory, 18 cm	1
24-388-20-07	Atraumatic forceps, DeBakey, 2 mm, 20 cm	1
24-395-23-07	Applying forceps for Bulldog clamps, 24 cm	1
24-399-06-07	Bulldog clamp, Glover, curved, 6.5 cm	2
24-425-07-07	Atraumatic kidney/pancreas forceps, 40 mm, 20 cm	2
24-425-08-07	Atraumatic kidney/pancreas forceps, 50 mm, 20 cm	2
24-425-09-07	Atraumatic kidney/pancreas forceps, 60 mm, 20 cm	2
24-425-24-07	Atraumatic tangential forceps, Satinsky, 26 cm	2
24-425-26-07	Atraumatic tangential forceps, Satinsky, 27.5 cm	2
24-430-21-07	Atraumatic anastomosis forceps, Lambert Kay, 22.5 cm	1
24-430-22-07	Atraumatic anastomosis forceps, Lambert Kay, 20.5 cm	1
24-435-27-07	Atraumatic forceps, Potts, curved, 26 cm	2
24-436-18-07	Atraumatic forceps, DeBakey, angled, 19 cm	2
24-436-19-07	Atraumatic forceps, DeBakey, 20 cm	1
24-437-20-07	Atraumatic forceps, DeBakey, angled, 21 cm	2
24-437-25-07	Atraumatic forceps, DeBakey, angled, 26 cm	2
24-439-20-07	Atraumatic forceps, DeBakey, curved, 20 cm	1
24-478-17-07	Anastomosis forceps, Cooley-Derra, 17 cm	2
24-478-18-07	Anastomosis forceps, Cooley-Derra, 17.5 cm	2

HF Surgery*

Reference	Description	Qty
80-287-89-04	Bipolar cable, Valleylab unit, KLS Martin instruments, 3 m	3
80-571-23-04	marCut® bipolar scissors, slim, curved 23 cm	1
80-630-15-04	Blade for marSeal, SU = 6/pack	1
80-630-43-04	marSeal Slim IQ cpl. instrument coding 200 mm	1
80-632-00-04	Blade for marClamp® Cut IQ, sterile, 18 cm	1
80-632-18-04	marClamp® Cut IQ with instrument coding, 18 cm	1
80-981-06-04	nonStick flush forceps, straight, blunt 2.0 mm, 23 cm	1
80-981-08-04	nonStick flush forceps, straight, blunt 2.0 mm, 30 cm	1
80-988-23-04	nonStick red forceps, straight, blunt 2.0 mm, 23 cm	1
80-989-23-04	nonStick red forceps, angled, blunt 2.0 mm, 23 cm	1
80-992-23-04	nonStick red forceps, bayonet, straight, 1.0 mm, 23 cm	1

* All instruments can be used with the maXium® generator.
For more information please visit our website www.klsmartin.com



Liver Transplantation

Explantation from living donor

Laparotomy
Mobilization of the liver

- ① Cholecystectomy and preparation of hepatoduodenal ligament
Mobilization the right hepatic lobe

- ② Delimitation and demarcation of the resection line
③ Discontinuation of the right bile duct
Splitting the liver capsule
Parenchyma transection
④ Discontinuation of right hepatic artery
⑤ Discontinuation of the portal vein and the right hepatic vein

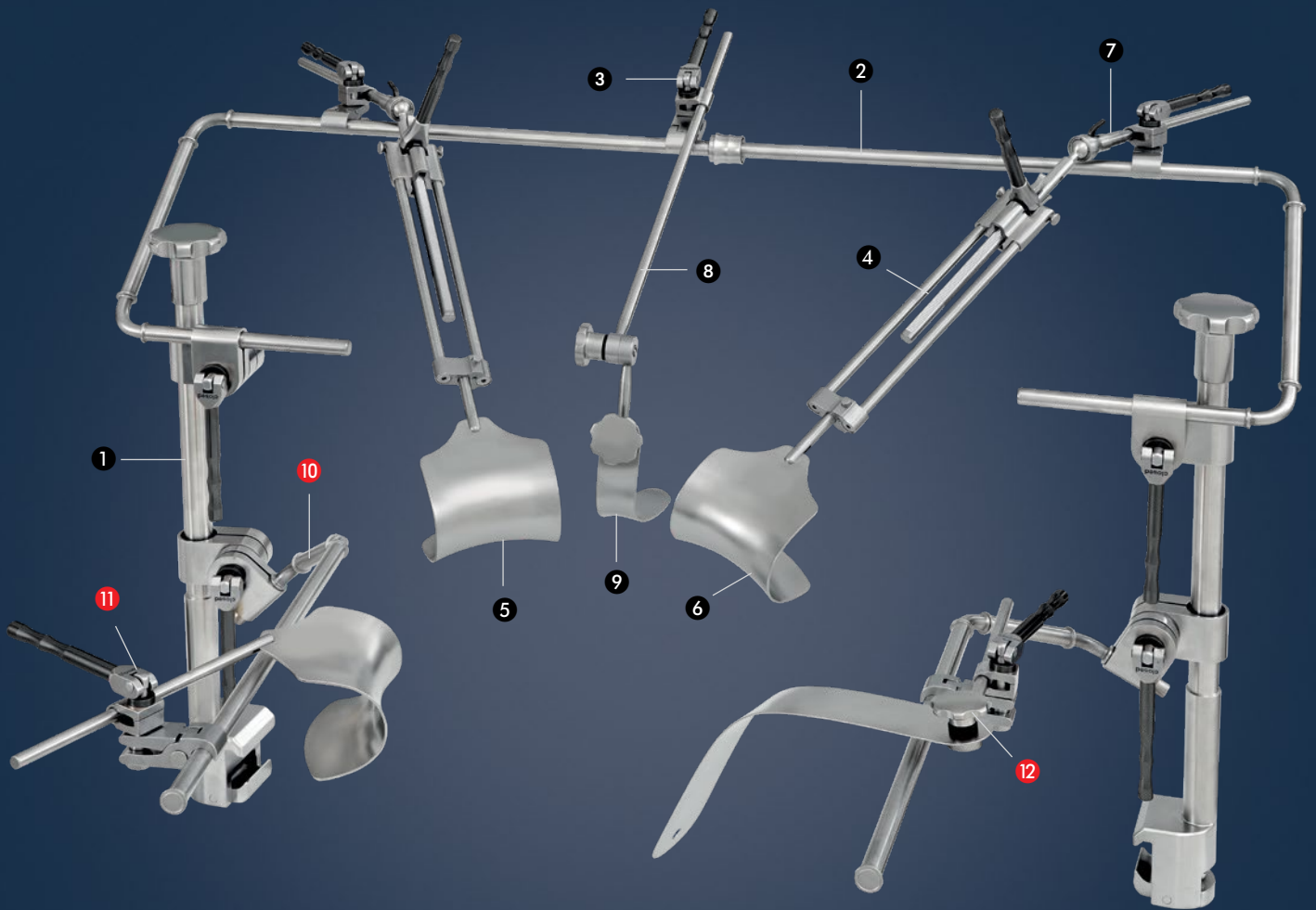
Implantation

- Mobilization of the liver
④ Discontinuation of the hepatic arteries
③ Discontinuation of the bile duct
⑤ Preparation and discontinuation of the portal vein
① Mobilization of the right hepatic lobe
⑤ Discontinuation of the hepatic veins
Removal of the recipient liver

- Introducing the donor organ
⑤ ④ Venous anastomosis, portal vein anastomosis
Arterial anastomosis
③ Bile duct anastomosis

Hemostasis and drainage
Abdominal closure

Liver Transplantation



Liver Transplantation

The liver transplantation system consists of the epigastric set and the extension for abdominal liver.

15-924-20-04		marTract® liver epigastrium consisting of	Qty.
15-920-11-07	❶	marTract® bracket, operating table, epigastrium	2
15-920-50-07	❷	marTract® retainer for epigastrium	1
15-920-33-07		marTract® spacer for radial piston	2
15-920-35-07	❸	marTract® fixing clip for retractor	4
15-920-51-07	❹	marTract® pulling device for epigastrium	2
15-922-90-07	❺	marTract® epigastrium, retractor, 85 x 60 mm	2
15-922-91-07	❻	marTract® epigastrium, retractor, 78 x 65 mm	2
15-920-43-07	❼	marTract® blade holder for epigastrium add-on	2
15-920-45-07	❽	marTract® blade holder, with stop, 40 cm	1
15-922-32-07	❾	marTract® Breisky, blade, 150 x 25 mm	1
15-922-10-07		marTract® Harrington, blade, 175 x 50 mm	1
15-921-51-07		marTract® Langenbeck, blade, 150 x 50 mm	1

15-924-21-04		marTract® liver abdominal consisting of	Qty.
15-920-24-07	❿	marTract® holding arm for liver add-on	2
15-920-35-07	⓫	marTract® fixing clip for retractor	4
15-920-40-07	⓬	marTract® blade holder, fixed	2
15-920-42-07		marTract® blade holder, movable	1
15-921-32-07		marTract® Kirschner, retractor, 78 x 65 mm	2
15-921-31-07		marTract® Kirschner, retractor, 85 x 60 mm	2
15-922-40-07		marTract® fan, blade, flexible, 140 x 90 mm	1
15-921-52-07		marTract® Langenbeck, blade, 200 x 50 mm	1
15-922-11-07		marTract® Harrington, blade, 175 x 65 mm	1
15-921-10-07		marTract® blade, flexible, 160 x 50 mm	1

Liver Transplantation



Instrument Set

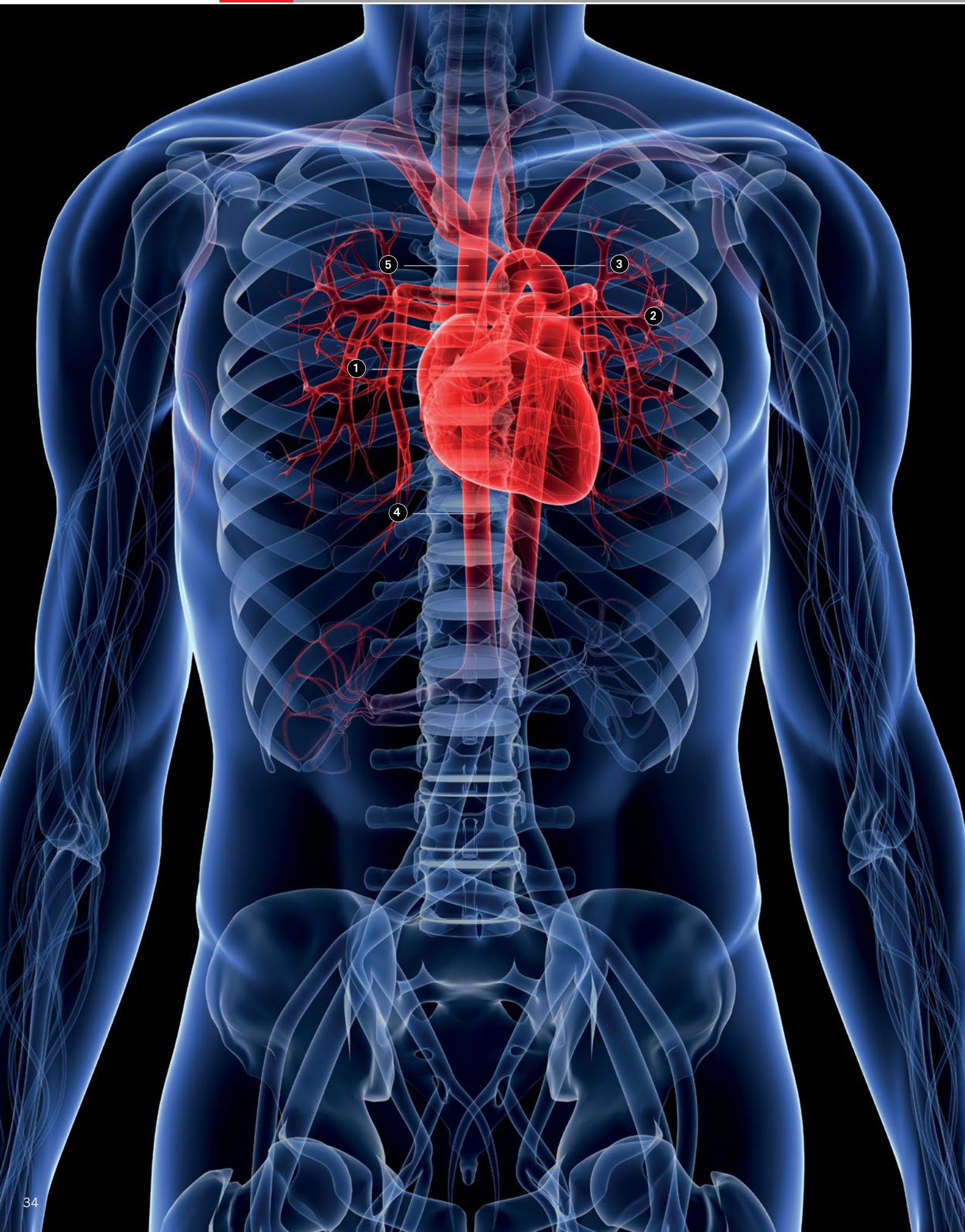
Reference	Description	Qty
10-130-03-07	Scalpel handle, No. 3, 12 cm	1
10-133-31-07	Scalpel handle, No. 3L, long, 21.5 cm	1
10-199-00-01	Kling-Ex, scalpel blade remover	1
11-335-18-07	Dissecting scissors, fine, S-shape, 18 cm	1
11-412-60-07	Coronary scissors, 60°, 10 mm, round, 18 cm	1
11-414-45-07	Coronary scissors, 45°, 7 mm, round, 18 cm	1
11-661-18-07	SC-dissecting scissors, Metzenbaum curved 18 cm	1
11-661-23-07	SC-dissecting scissors, Metzenbaum curved 23 cm	1
11-665-23-07	SC-dissecting scissors, Metzenbaum fine, curved, 23 cm	1
11-921-17-07	TCC-BlackLine scissors, fine, curved, 17 cm	1
11-943-18-07	TC-dissecting scissors, curved, 17.5 cm	1
11-961-23-07	TC-dissecting scissors, fine, curved, 23 cm	1
12-258-25-07	TC-dressing forceps, Potts-Smith, 25 cm	1
12-266-23-07	TC-dressing forceps, Wangenstein, 23 cm	1
12-568-18-07	Micro forceps, 1 x 2 teeth, straight, 0.4 mm, 18 cm	1
12-569-18-07	Micro forceps, 1 x 2 teeth, curved, 0.4 mm, 18 cm	1
13-050-14-07	Clip applying forceps, without lock, 14.5 cm	1
13-052-04-07	Vascular clip, Biemer, 6 mm	1
13-052-05-07	Vascular clip, Biemer, 9 mm	1
13-053-05-07	Vascular clip, Biemer, 9 mm, Slim	1
13-056-03-07	Approximator, Biemer-Mueller, 4.5 mm	1
13-058-05-07	Approximator, Biemer-Mueller, 9 mm	1
13-108-14-07	Bulldog clamp, lightweight, straight, 35 mm	1
13-121-10-07	Bulldog clamp, Diethrich, curved, 12 mm	2
13-121-12-07	Bulldog clamp, Diethrich, curved, 20 mm	1
13-123-20-07	Atraumatic Bulldog clamp, angled, 20 mm	2
13-311-12-07	Haemostatic forceps, Mosquito, curved, 12 cm	4
13-316-21-07	Haemostatic forceps, Mosquito, straight, 21 cm	4
13-321-12-07	Forceps Micro-Mosquito, curved, 12 cm	1
13-365-18-07	Haemostatic forceps, Adson, curved, 18.5 cm	4
13-419-18-07	Dissecting forceps, Baby-Mixer, curved, 18.5 cm	2
13-423-20-07	Dissecting forceps, Heiss, slight curved, 20 cm	2
13-451-18-07	Dissecting forceps, Gemini, straight curved, 18 cm	1
13-453-18-07	Dissecting forceps, Mini-Gemini, curved, 18 cm	1
13-453-22-07	Dissecting forceps, Mini-Gemini, curved, 23 cm	1
14-223-22-07	Forceps, Gross-Maier, curved, 22.5 cm	2
15-301-25-07	Retract, Langenbeck-Green, 6 x 25 mm, 16 cm	1
18-545-10-01	Suction tube, No. 0, for 18-545-00, 10 cm	1
18-550-22-01	Suction tube, Poole, straight, Ø 10 mm, 24 cm	1
18-611-20-07	Cannula, Heparin, Ø 2 mm, 45 mm	1
20-002-18-07	Micro needleholder, straight, with lock, 18 cm	1
20-011-21-07	Micro needleholder, curved, with lock, 21 cm	1
20-016-15-09	TI-Micro needleholder, straight, with lock, 15 cm	1
20-638-20-07	TC-needleholder, Crile-Wood, 20.5 cm	1
20-642-24-07	TC-needleholder, Mayo-Hegar, 24 cm	1
20-646-18-07	TC-needleholder, DeBakey, 18 cm	1
20-650-23-07	TC-needleholder, Ryder-Martin, 23 cm	1
20-654-13-07	TC-needleholder, Ryder-vascular, 12 cm	1

Reference	Description	Qty
20-654-20-07	TC-needleholder, Ryder-vascular, 20 cm	1
24-156-03-07	Aortic punch, Ø 4.0 mm, 15 cm	1
24-156-05-07	Aortic punch, Ø 5.0 mm, 15 cm	1
24-281-45-09	Ti-shunt-Bulldog clamp, 45°, 12 CH, 70 mm	2
24-354-27-07	Atraumatic aortic forceps, Cooley, 26.5 cm	1
24-384-30-07	Atraumatic forceps, DeBakey, 2.7 mm, 30 cm	1
24-386-20-07	Atraumatic forceps, DeBakey, 1.5 mm, 20 cm	1
24-388-24-07	Atraumatic forceps, DeBakey, 2 mm, 25 cm	1
24-395-23-07	Applying forceps for Bulldog clamps, 24 cm	1
24-416-27-07	Atraumatic aortic forceps, Kowalski, No. 2, 27cm	1
24-417-27-07	Atraumatic aneurysm forceps, DeBakey, 27 cm	1
24-423-26-07	Ligature forceps, DeBakey, S-sharp, 27 cm	1
24-425-00-07	Atraumatic vena cava forceps, Calne, 27 cm	1
24-425-24-07	Atraumatic tangential forceps, Satinsky, 26 cm	1
24-425-27-07	Atraumatic tangential forceps, Satinsky, 28.5 cm	1
24-435-27-07	Atraumatic forceps, Potts, curved, 26 cm	1
24-439-20-07	Atraumatic forceps, DeBakey, curved, 20 cm	1
24-441-16-07	Atraumatic forceps, DeBakey, angled, 16.5 cm	1
24-510-10-04	Dilator, DeBakey, Ø 1.0 mm, 19 cm, Nitinol	1
24-510-15-04	Dilator, DeBakey, Ø 1.5 mm, 19 cm, Nitinol	1
24-510-25-04	Dilator, DeBakey, Ø 2.5 mm, 19 cm, Nitinol	1
24-510-35-04	Dilator, DeBakey, Ø 3.5 mm, 19 cm, Nitinol	1
24-510-45-04	Dilator, DeBakey, Ø 4.5 mm, 19 cm, Nitinol	1
32-806-22-07	Fistula hook, Simon, 1-prong, 21.5 cm	2

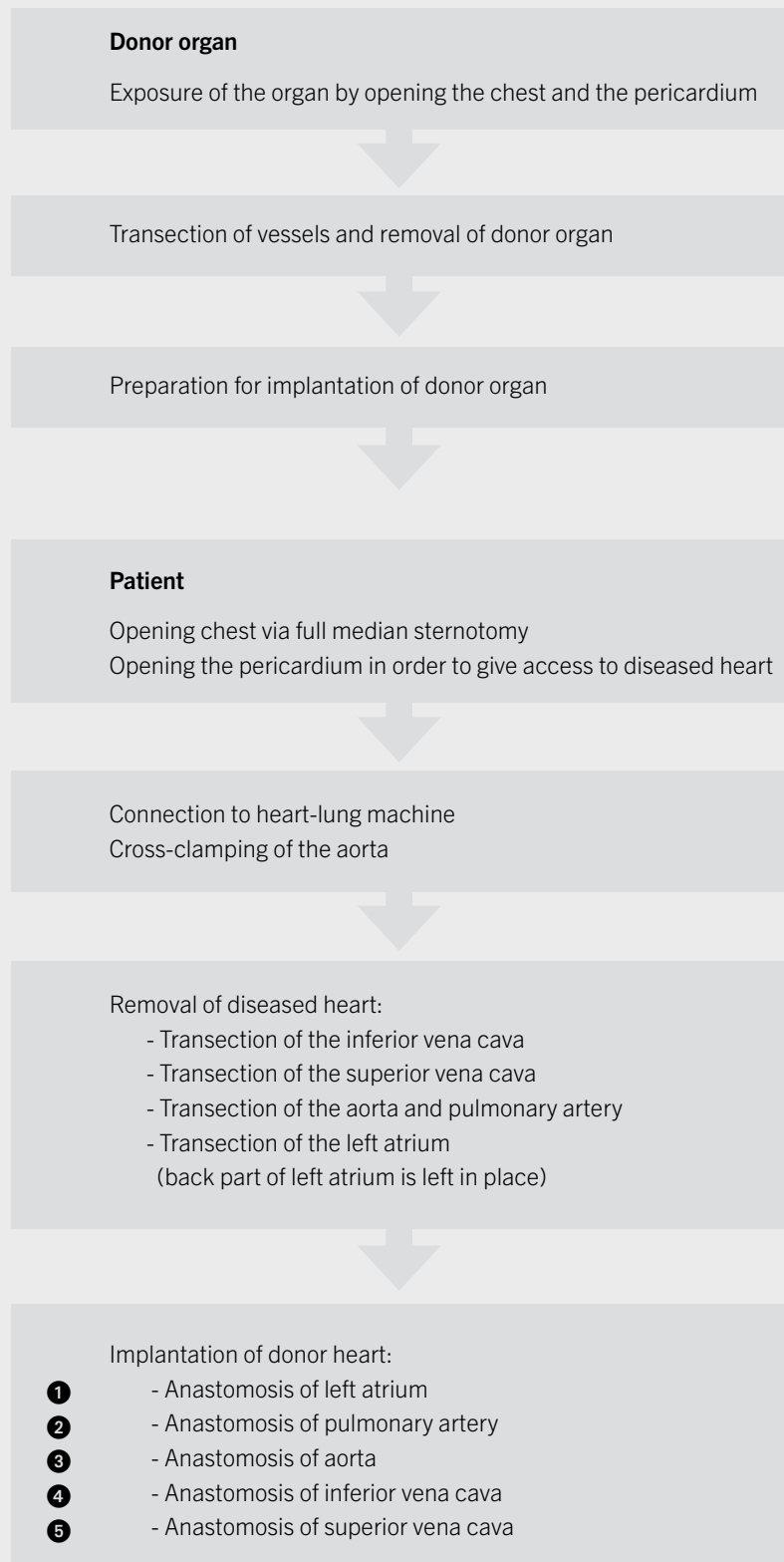
HF Surgery*

Reference	Description	Qty
80-287-89-04	Bipolar cable, Valleylab unit, KLS Martin instruments, 3 m	3
80-571-23-04	marCut® bipolar scissors, slim, curved 23 cm	1
80-630-15-04	Blade for marSeal, SU = 6/pack	1
80-630-43-04	marSeal Slim IQ cpl. instrument coding 200 mm	1
80-632-00-04	Blade for marClamp® Cut IQ, sterile, 18 cm	1
80-632-18-04	marClamp® Cut IQ with instrument coding, 18 cm	1
80-981-06-04	nonStick flush forceps, straight, blunt 2.0 mm, 23 cm	1
80-981-08-04	nonStick flush forceps, straight, blunt 2.0 mm, 30 cm	1
80-988-23-04	nonStick red forceps, straight, blunt 2.0 mm, 23 cm	1
80-989-23-04	nonStick red forceps, angled, blunt 2.0 mm, 23 cm	1
80-992-23-04	nonStick red forceps, bayonet, straight, 1.0 mm, 23 cm	1

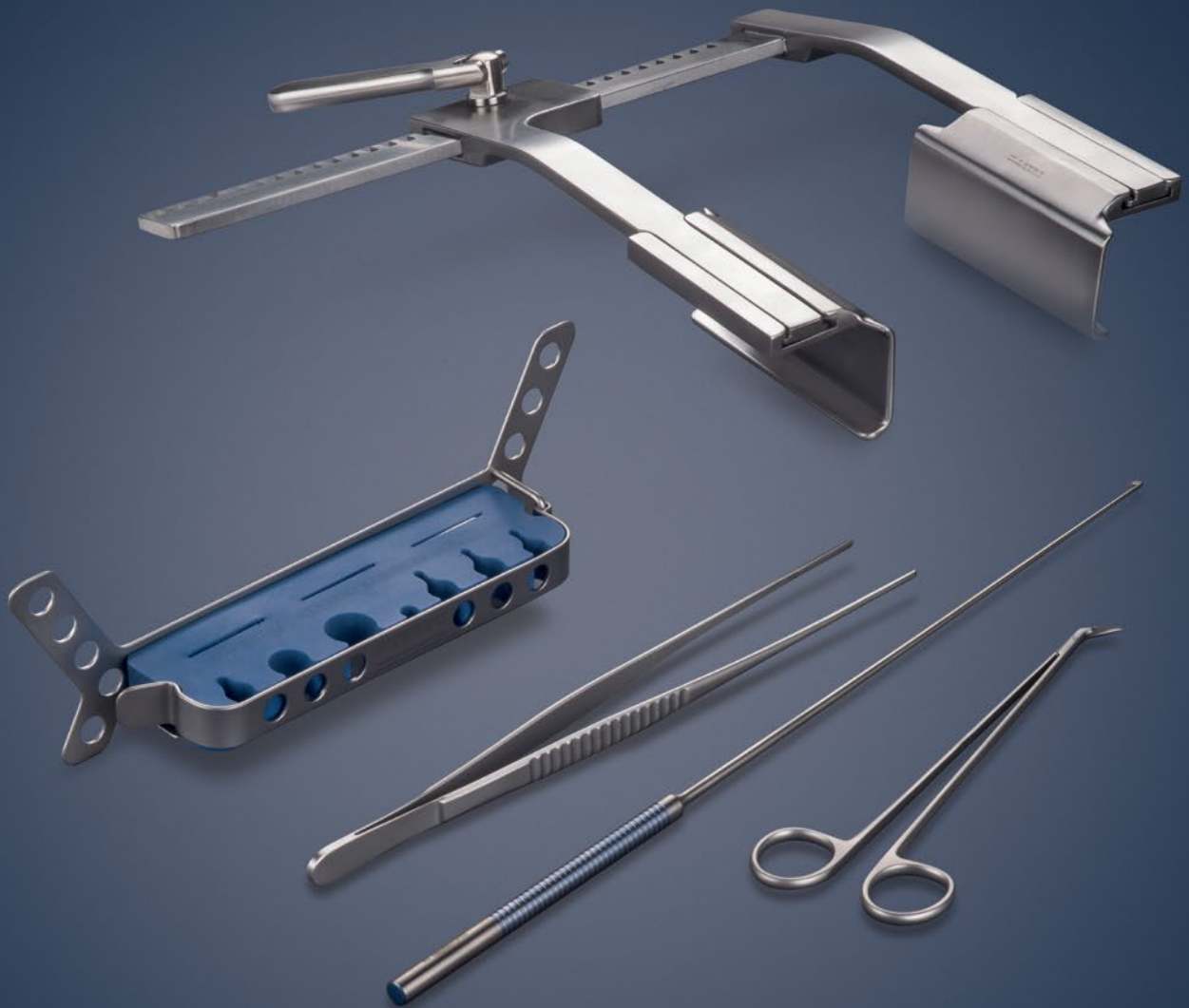
* All instruments can be used with the maXium® generator.
For more information please visit our website www.klsmartin.com



Heart Transplantation



Heart Transplantation Adults



Basic instruments adult

Reference	Description	Qty
11-102-14-07	Operating scissors, sharp/blunt, straight, 14.5 cm	1
11-285-23-07	Dissecting scissors, curved, 23 cm	1
11-325-16-07	Scissors, Lexer, fine, curved, 16.5 cm	1
11-943-18-07	TC-Dissecting scissors, curved, 17.5 cm	1
12-100-20-07	Dressing forceps, 20 cm	1
12-301-14-07	Tissue forceps, 1 x 2 teeth, 14.5 cm	1
12-321-14-07	Tissue forceps, 1 x 2 teeth, Slim, 14.5 cm	1
13-374-14-07	forceps, Pean, delicate, straight, 14.5 cm	20
13-410-24-07	Haemostatic forceps, Pean, straight, 24 cm	2
13-419-18-07	Dissecting forceps, Baby-Mixer, curved, 18.5 cm	1
13-443-03-07	Dissecting forceps, Overholt No. 3, 21.5 cm	1
13-443-06-07	Dissecting forceps, Overholt No. 6, 21.5 cm	1
13-745-20-07	Periton. forceps, Mikulicz, heavy, 20 cm	2
13-924-14-07	Towel forceps for paper drapes, 14 cm	8
14-100-22-07	Tampon forceps, Ulrich, straight, 22.5 cm	2
15-091-14-07	Hooklet, Desmarres, 14 mm, 16 cm	1
15-220-06-07	Retractor, Volkman, sharp, 6-PR, 22.5 cm	1
15-291-04-07	Retractor, Langenbeck, 40 x 11 mm, 22 cm	1
15-669-13-01	Retractor, double, Baby-Roux, 12.5 cm	1
15-771-13-07	Spreader, Adson, blunt, 3 x 4 teeth, 14.0 cm	1
15-777-32-07	Spreader, Adson, blunt, 4 x 5 teeth, 33 cm	1
18-581-12-07	Guide needle, curved, knife shape, 12 CH	1
18-610-15-07	Vein cannula, button-ended, 1.5 x 80 mm	4
20-638-20-07	TC-Needleholder, Crile-Wood, 20.5 cm	2
20-642-20-07	TC-Needleholder, Mayo-Hegar, 20 cm	2
20-646-23-07	TC-Needleholder, DeBakey, 23 cm	2
24-388-20-07	Atraumatic forceps, DeBakey, 2 mm, 20 cm	2
24-388-24-07	Atraumatic forceps, DeBakey, 2 mm, 25 cm	2
56-673-25-01	Kidney dish, 250 x 140 x 40 mm	1

HLM (Heart Lung machine)

Reference	Description	Qty
11-230-17-07	Scissors, Doyen, blunt/blunt, straight, 18.5 cm	1
11-380-25-07	Vascular scissors, Diethrich, 25°, 19 cm	1
11-380-60-07	Vascular scissors, Diethrich, 60°, 17.5 cm	1
12-258-23-07	TC-dressing forceps, Potts-Smith, 23 cm	2
13-310-12-07	Haemostatic forceps, Mosquito, straight, 12.5 cm	4
13-321-12-07	Forceps Micro-Mosquito, curved, 12 cm	4
13-938-00-07	Carrier for tube holding inlays	1
13-938-01-04	Inlay for adults variant 1, for 13-938-00-07	1
13-938-02-04	Inlay for adults variant 2, for 13-938-00-07	1
13-944-18-07	Tube clamp, standard, 19 cm	4
22-506-18-07	TC-wire twisting forceps, wide, 19 cm	1
22-523-16-07	TC-side nipper, with transm, 17.5 cm	1
24-342-16-07	Atraumatic profunda Clamp, Gregory, 16 cm	2
24-389-20-07	Atraumatic forceps, DeBakey, angled, 2 mm, 20 cm	1
24-417-27-07	Atraumatic aneurysm forceps, DeBakey, 27 cm	2
24-425-25-07	Atraumatic tangential forceps, Satinsky, 26.5 cm	1
24-550-20-07	Suture hook, Ø 2.0 mm, 26 cm	2
30-134-15-07	Tissue forceps, Allis, 5 x 6 T, 15.5 cm	2

Preparation of organ

Reference	Description	Qty
10-133-31-07	Scalpel handle, No. 3L, long, 21.5 cm	1
11-943-18-07	TC-Dissecting scissors, curved, 17.5 cm	1
11-943-25-07	TC-Dissecting scissors, curved, 26 cm	1
13-310-12-07	Haemostatic forceps, Mosquito, straight, 12.5 cm	10
15-321-01-07	Retractor, Zenker, angled, 35 x 9 mm, 25 cm	1
24-541-20-07	Nerve hook, crile, 90°, 20 cm	1
24-599-75-09	Hook, marCore, 10 mm, 36 cm	1
56-235-16-01	Bowl, H = 45, Ø 167 mm, 0.5 L	1

Retractor

Reference	Description	Qty
24-182-00-07	Retractor, DeBakey, lg, 240 x 190 mm, com	1

HF Surgery*

Reference	Description	Qty
80-287-89-04	Bipolar cable, Valleylab unit, KLS Martin instruments, 3 m	3
80-571-23-04	marCut® bipolar scissors, slim, curved 23 cm	1
80-630-15-04	Blade for marSeal, SU = 6/pack	1
80-630-43-04	marSeal Slim IQ cpl. instrument coding 200 mm	1
80-632-00-04	Blade for marClamp® Cut IQ, sterile, 18 cm	1
80-632-18-04	marClamp® Cut IQ with instrument coding, 18 cm	1
80-981-06-04	nonStick flush forceps, straight, blunt 2.0 mm, 23 cm	1
80-981-08-04	nonStick flush forceps, straight, blunt 2.0 mm, 30 cm	1
80-988-23-04	nonStick red forceps, straight, blunt 2.0 mm, 23 cm	1
80-989-23-04	nonStick red forceps, angled, blunt 2.0 mm, 23 cm	1
80-992-23-04	nonStick red forceps, bayonet, straight, 1.0 mm, 23 cm	1

* All instruments can be used with the maXium® generator.
For more information please visit our website www.klsmartin.com

Heart Transplantation Children



Children Set

Reference	Description	Qty
11-102-14-07	Operating scissors, sharp/blunt, straight, 14.5 cm	1
11-311-16-07	Dissecting scissors, Lexer, curved, 16 cm	1
11-965-17-07	TC-Dissecting scissors, Toennis, curved, 17.5 cm	1
12-100-20-07	Dressing forceps, 20 cm	1
12-258-18-07	TC-Dress. forceps, Potts-Smith, 18.5 cm	2
12-321-14-07	Tissue forceps, 1 x 2 teeth, Slim, 14.5 cm	2
13-341-14-07	Haemostatic forceps, Crile, curved, 14,5 cm	10
13-410-14-07	Haemostatic forceps, Pean, straight, 14.5 cm	4
13-414-16-07	Forceps, Kocher, 1 x 2 teeth, straight, 16.5 cm	2
13-419-18-07	Dissecting forceps, Baby-Mixter, curved, 18.5cm	1
13-421-14-07	Dissecting forceps, Baby-Adson, curved, 14.5 cm	1
13-421-18-07	Dissecting forceps, Baby-Adson, curved, 18 cm	1
13-924-14-07	Towel forceps for paper drapes, 14 cm	10
13-938-00-07	Carrier for tube holding inlays	1
13-938-03-04	Inlay for children, for 13-938-00-07	1
13-938-04-04	Inlay for infants, for 13-938-00-07	1
15-086-04-07	Hooklet, delicate, 4-pronges, 16.5 cm	2
15-091-08-07	Hooklet, Desmarres, 8 mm, 16 cm	2
15-171-14-07	Hooklet, Cushing, 14 mm, 20.5 cm	1
15-291-04-07	Retractor, Langenbeck, 40 x 11 mm, 22 cm	1
15-321-00-07	Retractor, Zenker, angled, 10 x 3 mm, 18 cm	1
15-321-01-07	Retractor, Zenker, angled, 35 x 9 mm, 25 cm	1
15-351-03-07	Retractor, Kocher, 40 x 20 mm, 23 cm	2
18-511-50-07	Suction tube, ped, 90°, Ø 5,0 mm, 16 cm	2
20-642-18-07	TC-Needleholder, Mayo-Hegar, 18.5 cm	2
20-646-18-07	TC-Needleholder, DeBakey, 18 cm	2
24-386-20-07	Atraumatic forceps, DeBakey, 1.5 mm, 20 cm	2
24-388-20-07	Atraumatic forceps, DeBakey, 2 mm, 20 cm	2
56-673-25-01	Kidney dish, 250 x 140 x 40 mm	1

Baby extension

Reference	Description	Qty
11-231-17-07	Scissors, Doyen, blunt/blunt, curved, 18.5 cm	1
13-311-12-07	Haemostatic forceps, Mosquito, curved, 12 cm	5
13-321-12-07	Forceps Micro-Mosquito, curved, 12 cm	5
13-944-15-07	Tube clamp, standard, 15.5 cm	2
13-946-18-07	Tube clamp, with protection clip, 19 cm	2
15-850-00-07	Abdominal retractor, Balfour-Baby, 12.5 cm	1
15-971-00-01	Abdominal spatula, Haberer, 16/25 mm, 20 cm	1
15-975-06-01	Spatula, Martin, malleable, 6.5 mm, 20 cm	1
15-975-13-01	Spatula, Martin, malleable, 13 mm, 20 cm	1
22-506-18-07	TC-wire twisting forceps, wide, 19 cm	8
22-523-16-07	TC-side Nipper, with transm, 17.5 cm	1
24-163-01-04	Rib spreader, Finochietto, ALU, 180 mm	1
24-177-75-07	Rib spreader, Finochietto-Baby, 15 x 20 x 75 mm	1
24-550-15-07	Suture Hook, Ø 1.5 mm, 26 cm	2

HF Surgery

Reference	Description	Qty
80-287-89-04	Bipolar cable, Valleylab unit, KLS Martin instruments, 3 m	1
80-572-13-04	marCut® bipolar scissors, super Slim, curved 13 cm	1
80-981-06-04	nonStick flush forceps, straight, 2.0 mm, 23 cm	1
80-985-12-04	nonStick red forceps, angled, blunt 0.6 mm, 12 cm	1
80-989-23-04	nonStick red forceps, straight, blunt 0.6 mm, 12 cm	1

For more information please visit our website www.klsmartin.com

10

10-100-04-07.....	27
10-130-03-07.....	27, 33
10-133-31-07.....	33, 37
10-199-00-01.....	27, 33

11

11-102-14-07.....	37, 39
11-230-17-07.....	37
11-231-17-07.....	39
11-285-23-07.....	37
11-311-16-07.....	39
11-325-16-07.....	37
11-335-18-07.....	33
11-380-25-07.....	37
11-380-60-07.....	37
11-381-45-07.....	27
11-382-00-07.....	27
11-400-45-07.....	27
11-401-00-07.....	27
11-403-00-07.....	27
11-412-60-07.....	33
11-414-45-07.....	33
11-661-18-07.....	27, 33
11-661-23-07.....	33
11-665-23-07.....	33
11-671-15-07.....	27
11-671-18-07.....	27
11-911-23-07.....	27
11-921-17-07.....	33
11-943-18-07.....	27, 33, 37
11-943-25-07.....	37
11-953-16-07.....	27
11-961-18-07.....	27
11-961-23-07.....	27, 33
11-965-17-07.....	39

12

12-100-20-07.....	37, 39
12-258-18-07.....	27, 39
12-258-23-07.....	37
12-258-25-07.....	33
12-266-23-07.....	33
12-282-16-09.....	27
12-301-14-07.....	37
12-321-14-07.....	37, 39
12-467-23-07.....	27
12-568-18-07.....	33

12-569-18-07.....	33
12-574-18-07.....	27
12-574-21-07.....	27
12-586-21-09.....	27
12-590-18-09.....	27
12-624-12-07.....	27

13

13-050-14-07.....	33
13-052-04-07.....	33
13-052-05-07.....	33
13-053-05-07.....	33
13-056-03-07.....	33
13-058-05-07.....	33
13-108-14-07.....	33
13-121-08-07.....	27
13-121-10-07.....	27, 33
13-121-12-07.....	27, 33
13-122-20-07.....	27
13-123-20-07.....	33
13-125-20-07.....	27
13-266-25-07.....	27
13-310-12-07.....	37
13-311-12-07.....	33, 39
13-316-21-07.....	33
13-321-12-07.....	33, 37, 39
13-341-14-07.....	39
13-365-18-07.....	33
13-374-14-07.....	37
13-410-14-07.....	39
13-410-24-07.....	37
13-414-16-07.....	39
13-419-18-07.....	33, 37, 39
13-421-14-07.....	39
13-421-18-07.....	39
13-423-20-07.....	33
13-443-03-07.....	37
13-443-06-07.....	37
13-451-18-07.....	33
13-453-18-07.....	33
13-453-22-07.....	33
13-725-18-07.....	27
13-745-20-07.....	37
13-924-14-07.....	37, 39
13-938-00-07.....	37, 39
13-938-01-04.....	37
13-938-02-04.....	37
13-938-03-04.....	39
13-938-04-04.....	39

13-944-15-07.....	39
13-944-18-07.....	37
13-946-18-07.....	39

14

14-100-22-07.....	37
14-223-22-07.....	33

15

15-086-04-07.....	39
15-091-08-07.....	39
15-091-14-07.....	37
15-171-14-07.....	39
15-220-06-07.....	37
15-291-04-07.....	37, 39
15-301-25-07.....	33
15-321-00-07.....	39
15-321-01-07.....	37, 39
15-351-03-07.....	39
15-669-13-01.....	37
15-771-13-07.....	37
15-777-32-07.....	37
15-850-00-07.....	39
15-920-10-07.....	25
15-920-11-07.....	31
15-920-21-07.....	25
15-920-22-07.....	25
15-920-24-07.....	31
15-920-30-07.....	25
15-920-33-07.....	31
15-920-34-07.....	25
15-920-35-07.....	25, 31
15-920-40-07.....	25, 31
15-920-42-07.....	25, 31
15-920-43-07.....	31
15-920-45-07.....	31
15-920-50-07.....	31
15-920-51-07.....	31
15-921-10-07.....	25, 31
15-921-13-07.....	25
15-921-30-07.....	25
15-921-31-07.....	31
15-921-32-07.....	31
15-921-50-07.....	25
15-921-51-07.....	25, 31
15-921-52-07.....	31
15-922-10-07.....	25, 31
15-922-11-07.....	25, 31

15-922-20-07.....	25
15-922-31-07.....	25
15-922-32-07.....	25, 31
15-922-33-07.....	25
15-922-40-07.....	31
15-922-90-07.....	31
15-922-91-07.....	31
15-924-00-04.....	25
15-924-14-04.....	25
15-924-20-04.....	31
15-924-21-04.....	31
15-971-00-01.....	39
15-975-06-01.....	39
15-975-13-01.....	39

16

16-100-18-01.....	27
-------------------	----

18

18-511-50-07.....	39
18-545-10-01.....	33
18-550-22-01.....	33
18-581-12-07.....	37
18-610-15-07.....	37
18-611-20-07.....	33

20

20-002-18-07.....	33
20-010-18-07.....	27
20-010-21-07.....	27
20-011-21-07.....	33
20-016-15-09.....	33
20-020-18-09.....	27
20-030-18-07.....	27
20-030-21-07.....	27
20-620-18-07.....	27
20-620-21-07.....	27
20-638-20-07.....	33, 37
20-642-18-07.....	27, 39
20-642-20-07.....	37
20-642-24-07.....	33
20-646-18-07.....	27, 33, 39
20-646-20-07.....	27
20-646-23-07.....	37
20-650-23-07.....	33
20-654-13-07.....	33
20-654-15-07.....	27

20-654-18-07.....	27
20-654-20-07.....	27, 33

22

22-506-18-07.....	37, 39
22-523-16-07.....	37, 39

24

24-156-03-07.....	27, 33
24-156-05-07.....	27, 33
24-163-01-04.....	39
24-177-75-07.....	39
24-182-00-07.....	37
24-281-45-09.....	27, 33
24-288-07-09.....	27
24-297-11-07.....	27
24-342-16-07.....	37
24-342-18-07.....	27
24-354-27-07.....	33
24-384-30-07.....	33
24-386-20-07.....	33, 39
24-388-20-07.....	27, 37, 39
24-388-24-07.....	33, 37
24-389-20-07.....	37
24-395-23-07.....	27, 33
24-399-06-07.....	27
24-416-27-07.....	33
24-417-27-07.....	33, 37
24-423-26-07.....	33
24-425-00-07.....	33
24-425-07-07.....	27
24-425-08-07.....	27
24-425-09-07.....	27
24-425-24-07.....	27, 33
24-425-25-07.....	37
24-425-26-07.....	27
24-425-27-07.....	33
24-430-21-07.....	27
24-430-22-07.....	27
24-435-27-07.....	27, 33
24-436-18-07.....	27
24-436-19-07.....	27
24-437-20-07.....	27
24-437-25-07.....	27
24-439-20-07.....	27, 33
24-441-16-07.....	33
24-478-17-07.....	27
24-478-18-07.....	27
24-510-10-04.....	33
24-510-15-04.....	33

24-510-25-04.....	33
24-510-35-04.....	33
24-510-45-04.....	33
24-541-20-07.....	37
24-550-15-07.....	39
24-550-20-07.....	37
24-599-75-09.....	37

30

30-134-15-07.....	37
-------------------	----

32

32-806-22-07.....	33
-------------------	----

56

56-235-16-01.....	37
56-673-25-01.....	37, 39

80

80-287-89-04.....	27, 33, 37, 39
80-571-23-04.....	27, 33, 37
80-572-13-04.....	39
80-630-15-04.....	27, 33, 37
80-630-43-04.....	27, 33, 37
80-632-00-04.....	27, 33, 37
80-632-18-04.....	27, 33, 37
80-981-06-04.....	27, 33, 37, 39
80-981-08-04.....	27, 33, 37
80-985-12-04.....	39
80-988-23-04.....	27, 33, 37
80-989-23-04.....	27, 33, 37, 39
80-992-23-04.....	27, 33, 37

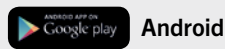
KLS Martin Surgical App



The KLS Martin Surgical app combines all the essential information about surgical instruments and sterilization technologies on one platform.

The KLS Martin App is the perfect mobile tool to access our world of information.

Please scan the QR codes below for download of the KLS Martin Surgical App.



KLS Martin Group

KLS Martin Australia Pty Ltd.

Sydney · Australia
Tel. +61 2 9439 5316
australia@klsmartin.com

Martin Italia S.r.l.

Milan · Italy
Tel. +39 039 605 67 31
italia@klsmartin.com

Martin Nederland/Marned B.V.

Huizen · The Netherlands
Tel. +31 35 523 45 38
nederland@klsmartin.com

KLS Martin UK Ltd.

London · United Kingdom
Tel. +44 1189 000 570
uk@klsmartin.com

KLS Martin do Brasil Ltda.

São Paulo · Brazil
Tel. +55 11 3554 2299
brazil@klsmartin.com

Nippon Martin K.K.

Tokyo · Japan
Tel. +81 3 3814 1431
nippon@klsmartin.com

Gebrüder Martin GmbH & Co. KG

Moscow · Russia
Tel. +7 499 792-76-19
russia@klsmartin.com

KLS Martin LP

Jacksonville · Florida, USA
Tel. +1 904 641 77 46
usa@klsmartin.com

KLS Martin Medical (Shanghai) International Trading Co. Ltd.

Shanghai · China
Tel. +86 21 5820 6251
china@klsmartin.com

KLS Martin SE Asia Sdn. Bhd.

Penang · Malaysia
Tel. +604 505 7838
malaysia@klsmartin.com

KLS Martin Taiwan Ltd.

Taipei 106 · Taiwan
Tel. +886 2 2325 3169
taiwan@klsmartin.com

KLS Martin India Pvt Ltd.

Chennai · India
Tel. +91 44 66 442 300
india@klsmartin.com

KLS Martin de México S.A. de C.V.

Mexico City · Mexico
mexico@klsmartin.com

Gebrüder Martin GmbH & Co. KG

Dubai · United Arab Emirates
Tel. +971 4 454 16 55
middleeast@klsmartin.com

Gebrüder Martin GmbH & Co. KG

A company of the KLS Martin Group

KLS Martin Platz 1 · 78532 Tuttlingen · Germany
P.O. Box 60 · 78501 Tuttlingen · Germany
Tel. +49 7461 706-0 · Fax +49 7461 706-193
info@klsmartin.com · www.klsmartin.com

