



## **independant®**

Accessory Catalog for Ceiling Supply Units



## Table of Contents

	Pages
Infusion Accessories	4-7
Standard Rails	8-9
Catheter Accessories	10
Tube Holders, Bottle Holders, Accessory Holders	12-15
Cable Management Systems	16-17
Shelves, Trays, and Drawers	18-22
TFT Suspension Arms and Keyboard Trays	23-25
Lighting	26-27

## Infusion accessories

As an integral part of patient care, efficient infusion management continuously improves procedures in the OR and thus ensures a smooth workflow. This is why the KLS Martin Group offers infusion accessories for use in operating rooms and intensive care units.

### 85-605-08-04

Height adjustable CVP\* stand, straight, with four hooks



- For holding infusion bags, infusion bottles, and up to two pumps
- For mounting on a standard rail
- Material: stainless steel
- Height adjustment range from 1,175 - 2,040 mm
- Rod diameter 25 / 18 mm
- Four safety bottle holders (ISO 15375)
- Load-bearing capacity: 2 kg / hook
- To attach up to three infusion poles, order article 85-000-83-04 in addition  
To attach one infusion pole order article 85-000-84-04 in addition
- Manufacturer: Provita Medical GmbH & Co. KG

### 85-605-11-04

Infusion stand, curved, with four hooks



- For holding infusion bags, infusion bottles, and up to two pumps
- Material: stainless steel
- Height adjustment range: approx. 1,400 - 1,860 mm
- Rod diameter 25 / 18 mm
- Four safety bottle hooks (ISO 15375)
- Load-bearing capacity: 2 kg / hook
- One-hand safety height adjustment, additional screw height adjustment
- 2 x 45° angled
- Incl. two fixing clamps for mounting on standard rail 25 x 10 and 30 x 10 mm
- Manufacturer: Provita Medical GmbH & Co. KG

\* CVP = central venous pressure

#### 85-605-12-04

Infusion stand, straight, four hooks Ø18/14



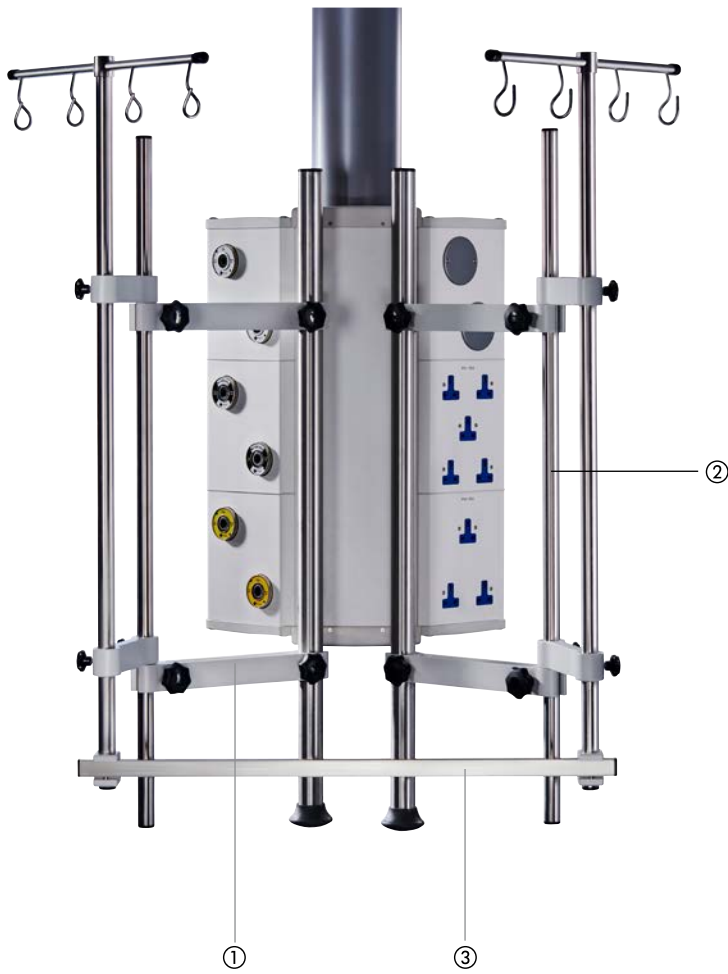
- For holding infusion bags and infusion bottles
- Material: stainless steel
- One-hand safety height adjustment, height adjustment range: 370 mm
- Four safety bottle hooks (ISO 15375)
- Load-bearing capacity: 2 kg / hook
- Incl. fixing clamp, for mounting on standard rail 25 x 10 and 30 x 10 mm
- Manufacturer: Provita Medical GmbH & Co. KG

#### 85-605-07-04

Infusion rod with four hooks, incl. two suspension arms



- Material: stainless steel
- Length: 1,000 mm
- Diameter: 25 mm
- Four stainless steel bottle hooks
- Including two pivot arms (85-605-01-04)
- Load-bearing capacity: 30 kg
- Manufacturer: Gebrüder Martin GmbH & Co. KG



① **85-605-01-04\***  
Pivot arm for infusion pole

- Mounting on the multifunction rack  $\varnothing$  38 mm
- Standard, rail 25 x 10 mm
- Please always order two units

② **85-605-05-04\***  
Extension for infusion pole

- Infusion extension with two pivot arms (85-605-01-04)
- Length: 1000 mm
- Mounting on the multifunction rack  $\varnothing$  38 mm

③ **85-605-06-04\***  
Infusion cross bar  $\varnothing$  25 mm

- Standard rail 25 x 10 mm for infusion pole
- For mounting between 2 x 85-605-05-04

\* Article can only be ordered in connection with the M6 supply unit

**85-605-02-04\***

Drip holder, curved, with four bottle hooks



- Drip holder, curved, with gooseneck and four bottle hooks
- Load-bearing capacity: max. 8 kg
- Mounting on the multifunction rack Ø 38 mm

**85-000-93-04**

Collection container for infusion pole



- Collecting vessel made of Plexiglas
- For mounting on multifunction rack (Ø 38 mm) or infusion poles (Ø 25 mm)
- Weight: 60 g
- Manufacturer: W. Krömker GmbH

\* Article can only be ordered in connection with the M6 supply unit

## Standard rails

The KLS Martin standard rails are the perfect solution for easy mounting of accessories on ceiling supply units. They ensure simple, fast and secure mounting of accessories such as baskets, waste bag holders, or examination lights.

### 85-605-25-04

Circumferential standard rail



- Material of standard rail: stainless steel
- Material of fixing clamps: aluminum
- Mounting on the multifunction rack  $\varnothing$  38 mm with two clamps
- Mounting options over a length of 1,300 mm depending on the length of the multifunction rack
- Load-bearing capacity: 40 kg
- Manufacturer: Gebrüder Martin GmbH & Co. KG

---

### 85-605-26-04

Standard rail 25 x 10 mm for multifunction rack  $\varnothing$  25 mm

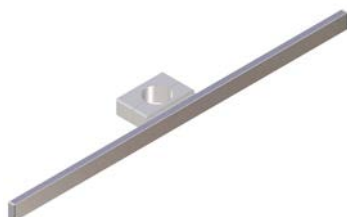


- Material: stainless steel
- Profile: 25 x 10 mm
- Overall length: 558 mm
- Mounting on round tubes  $\varnothing$  25 mm using a clamp
- Load-bearing capacity: 8 kg
- Manufacturer: Provita Medical GmbH & Co. KG

---

### 85-605-27-04

Standard rail 25 x 10 mm for multifunction rack  $\varnothing$  38 mm



- Material: stainless steel
- Profile: 25 x 10 mm
- Overall length: 558 mm
- Mounting on the multifunction rack  $\varnothing$  38 mm with a clamp
- Load-bearing capacity: 8 kg
- Manufacturer: Provita Medical GmbH & Co. KG



**85-604-90-04\***

Standard rail, straight



- For mounting on the front or rear panel of the unit if a multifunction rack is not available
- Load-bearing capacity: max. 10 kg
- Material: VA steel

**85-604-92-04\***

Standard rail, straight, two switches for pneumatic brake



- For mounting on the front or rear panel of the unit if a multifunction rack is not available
- Load-bearing capacity: max. 10 kg
- Material: VA steel

**85-604-94-04\***

Standard rail, curved



- Dimensions: 25 x 10 x 430 mm
- Load-bearing capacity: max. 10 kg
- Material: VA steel

**85-605-28-04**

Compact rail (two-part) for multifunction rack Ø 38 mm



- Profile: 25 x 10 mm
- Dimensions: 110 x 110 mm
- Load-bearing capacity max. 10 kg
- Mounting on the multifunction rack Ø 38 mm with a clamp
- Manufacturer: Provita Medical GmbH & Co. KG

\* Article can only be ordered in connection with the M6 supply unit

## Catheter accessories

The catheter baskets are available in different shapes and sizes. They can be suspended directly from the standard rail or fixed with a clamp.

### 85-605-30-04

Basket with clip for equipment rail 25 x 10 mm



- Material: steel, powder-coated
- Color: gray
- Load-bearing capacity max. 5 kg
- Dimensions: 250 x 90 x 250 mm
- Incl. fixing clamps for standard rail 25 x 10 and 30 x 10 mm
- Manufacturer: Provita Medical GmbH & Co. KG

---

### 85-000-81-04

Catheter basket



- Dimensions: 280 x 150 x 100 mm
- Weight: 0.8 kg
- Incl. mounting clamp on standard rail
- Material: chrome-plated stainless steel
- Manufacturer: W. Krömker GmbH

---

### 85-000-80-04

Catheter basket



- Dimensions: 480 x 150 x 100 mm
- Weight: 1.0 kg
- Incl. mounting clamp on standard rail
- Material: chrome-plated stainless steel
- Manufacturer: Gebrüder Martin GmbH & Co. KG



## Tube holders, bottle holders, accessory holders

Tube and bottle holders as well as general accessory holders support the organized workflow in the OR. The accessories can be attached easily to the standard rails or the multifunction rack.

### 85-605-31-04

Tube holder for multifunction rack Ø 38 mm



- For mounting with a grub screw
  - Material: stainless steel
  - Manufacturer: Provita Medical GmbH & Co. KG
- 

### 85-000-88-04

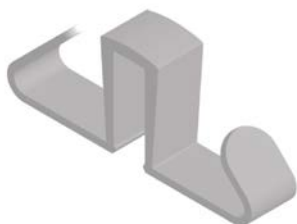
Tube holder on standard rail



- Tube holder for standard rail 25 x 10 mm
  - Material: chrome (matt)
  - VA angle bracket for tubes Ø 4-22 mm
  - Weight: 0.2 kg
  - Manufacturer: W. Krömker GmbH
- 

### 85-605-33-04

Cable/tube holder on standard rail



- For mounting on standard rail 25 x 10 mm and 30 x 10 mm
- Material: plastic
- Not suitable for mounting on a tray with standard rail
- Manufacturer: Provita Medical GmbH & Co. KG

#### 85-001-59-04

Articulated arm with four tube holding clamps



- For mounting on standard rail 25 x 10 mm and 30 x 10 mm
- Material: chrome-plated steel
- Work area: approx. 1,000 mm
- Manufacturer: Provita Medical GmbH & Co. KG

#### 85-609-80-04

Gas bottle holder on multifunction rack (2-3 L)



- For attaching 2-3 L oxygen cylinders to standard rail 25 x 10 mm and 30 x 10 mm
- Material: powder-coated steel
- Dimensions: 187.5 x 180 x 383 mm
- Color: RAL 9006
- Manufacturer: Provita Medical GmbH & Co. KG

#### 85-609-79-04

Gas bottle holder on multifunction rack (5 L)



- For attaching 2-5 L oxygen cylinders to multifunction rack  $\varnothing$  38 mm with two fixing clamps
- Material: powder-coated steel
- Dimensions: 187.5 x 180 x 383 mm
- Color: RAL 9006
- Manufacturer: Provita Medical GmbH & Co. KG

#### 85-605-32-04

Pump holder on standard rail 25 x 500 mm



- For holding infusion pumps or other medical devices
- For mounting on standard rail 25 x 10 mm and 30 x 10 mm
- Material: stainless steel and aluminum
- Dimensions: 25 x 500 mm
- Load-bearing capacity: 5 kg
- Manufacturer: Provita Medical GmbH & Co. KG

---

#### 85-605-34-04

Universal hook for standard rail 25 / 30 x10 mm



- For mounting on standard rail 25 x 10 mm and 30 x 10 mm
- Material: stainless steel and aluminum
- Load-bearing capacity max. 2 kg.
- Manufacturer: Provita Medical GmbH & Co. KG

---

#### 85-000-78-04

Waste bag holder for standard rail



- Waste bag holder with fixing clamp for standard rail, chrome-plated
- Dimensions: 270 x 190 mm
- Weight: 0.8 kg
- Load-bearing capacity: 5 kg
- Material: painted steel
- Manufacturer: W. Krömker GmbH

#### 85-000-85-04

Holding clamp with 4 x M5 holes



- Holding clamp for various standard rails, anodized, four holes for M5, for rails up to 40 mm
- Horizontal and vertical adjustment possible (e.g., for mounting baskets)
- Weight: 0.3 kg
- Material: anodized aluminum
- Manufacturer: W. Krömker GmbH

#### 85-000-89-04

Towel holder for standard rail



- Hook for standard rail 25 x 10 mm
- Material: stainless steel
- Weight: 9 g
- Load-bearing capacity: 3 kg
- Manufacturer: W. Krömker GmbH

#### 85-000-83-04

Infusion pole holder for three poles



- Infusion pole holder for three poles
- For mounting on standard rail 25 x 10 mm
- Three holes with star grip
- Color: RAL 9002
- Weight: 0.7 kg
- Can be used with a height-adjustable CVP\* stand, 85-605-08-04
- Manufacturer: W. Krömker GmbH

#### 85-000-84-04

Infusion pole holder for one pole



- Infusion pole holder for one pole
- For mounting on standard rail 25 x 10 mm
- Hole  $\varnothing$  25.3 mm for (infusion) stand
- Color: RAL 9002
- Weight: 0.7 kg
- Can be used with a height-adjustable CVP\* stand, 85-605-08-04
- Manufacturer: W. Krömker GmbH

\* CVP = central venous pressure

## Cable management system

Tubing and cables lying freely on the floor pose a tripping hazard and make floor disinfection considerably more difficult. By using a smart cable management system, the equipment is both protected from damage and contamination and avoids stumbling hazards.



① **85-603-33-04**

Cable duct on multifunction rack, length 300 mm

② **85-603-35-04**

Cable duct on multifunction rack, length 500 mm

③ **85-603-37-04**

Cable duct on multifunction rack, length 700 mm

- For lateral mounting on multifunction rack or between both multifunction racks
- For concealing excess power cables between medical device and power outlet
- Different lengths: 300, 500 and 700 mm
- Manufacturer: Ondal Medical Systems GmbH

④ **85-603-00-04**

Impact protection for rack pole

- Impact guard
- For attaching to the multifunction rack
- Please always order two units
- Manufacturer: Gebrüder Martin GmbH & Co. KG



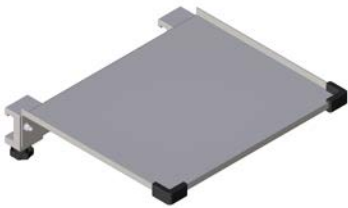


## Shelves, trays, and drawers

Having equipment ready to hand at all times is facilitated by shelves and trays. This allows the available space to be used more efficiently and each workplace can be designed individually. Drawer modules in various designs are also useful in all medical fields and make the work of staff easier.

### 85-605-60-04

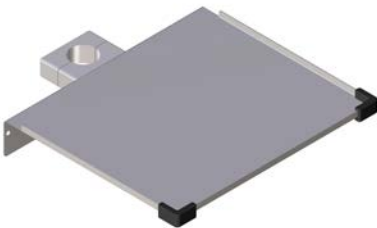
Univ. tray 300 x 250 mm on standard rail



- For mounting on standard rails 25 x 10 mm and 30 x 10 mm by means of two mounting clamps (included in delivery)
- Dimensions: 300 x 250 mm
- Material: stainless steel (tray); aluminum (fixing clamp)
- Edge protection
- Load-bearing capacity max. 4 kg
- Manufacturer: Provita Medical GmbH & Co. KG

### 85-605-61-04

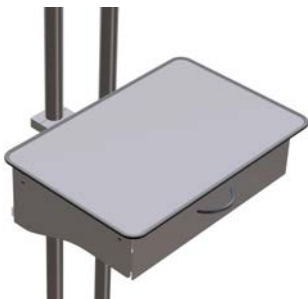
Univ. tray 315 x 275 mm on multifunction rack



- For mounting on multifunction rack Ø 38 mm by means of a fixing clamp (included in delivery)
- Dimensions: 315 x 275 mm
- Material: stainless steel
- Edge protection
- Load-bearing capacity max. 5 kg
- Manufacturer: Provita Medical GmbH & Co. KG

### 85-605-62-04

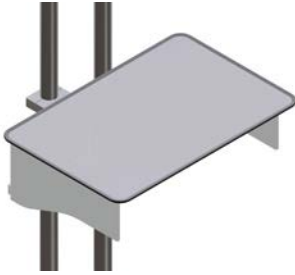
Univ. tray 540 x 360 mm with drawer on multifunction rack



- For mounting on multifunction rack Ø 38 mm by means of two mounting clamps (included in delivery)
- Dimensions tray 540 x 360 mm
- Dimensions drawer: 420 x 310 x 120 mm
- Material: stainless steel
- Incl. drawer and edge protection, without standard rail
- Load-bearing capacity max. 5 kg
- Manufacturer: Provita Medical GmbH & Co. KG

**85-605-63-04**

Univ. tray 540 x 360 mm on multifunction rack



- For mounting on multifunction rack  $\varnothing$  38 mm by means of two mounting clamps (included in delivery)
- Dimensions: 540 x 360 mm
- Material: stainless steel
- Including edge protection, without standard rail
- Load-bearing capacity max. 40 kg
- Manufacturer: Provita Medical GmbH & Co. KG

**85-605-64-04**

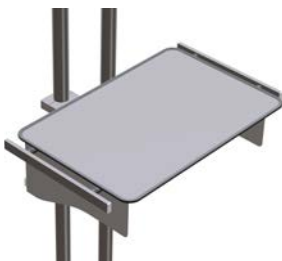
Univ. tray 540 x 360 mm with drawer and two standard rails



- For mounting on multifunction rack  $\varnothing$  38 mm by means of two mounting clamps (included in delivery)
- Dimensions tray 540 x 360 mm
- Dimensions drawer: 420 x 310 x 120 mm
- Material: stainless steel
- Incl. edge protection, drawer, 2 x standard rail 25 x 10 mm
- Load-bearing capacity max. 40 kg
- Manufacturer: Provita Medical GmbH & Co. KG

**85-605-65-04**

Univ. tray 540 x 360 mm with two standard rails



- For mounting on multifunction rack  $\varnothing$  38 mm by means of two mounting clamps (included in delivery)
- Dimensions tray 540 x 360 mm
- Material: stainless steel
- Incl. edge protection, 2 x standard rail 25 x 10 mm
- Load-bearing capacity max. 40 kg
- Manufacturer: Provita Medical GmbH & Co. KG

#### 85-604-70-04

Tray 520 mm on multifunction rack



- Aluminum sheath with impact protection
- Dimensions: 520 x 450 mm
- External dimensions without mounting clamp: 585 x 450 x 36 mm
- Without standard rails
- Color: RAL 9006
- Load-bearing capacity: 80 kg
- Weight: 7.2 kg
- Manufacturer: Gebrüder Martin GmbH & Co. KG

---

#### 85-604-71-04

Tray 520 mm rail 25VA on multifunction rack

#### 85-604-80-04

Tray 520 mm rail 30AL on multifunction rack



- Aluminum sheath with impact protection and standard rail (25VA/30AL)
- Dimensions: 520 x 450 mm
- External dimensions without mounting clamp: 610 x 450 x 36 mm
- Color: RAL 9006
- Load-bearing capacity: 80 kg
- Weight: 8 kg
- Manufacturer: Gebrüder Martin GmbH & Co. KG

---

#### Article number available upon request

Tray 520 mm with operating function on multifunction rack



- Aluminum sheath with impact protection and standard rail (25VA/30AL)
- Dimensions: 520 x 450 mm
- External dimensions without mounting clamp: 610 x 540 x 36 mm
- Color: RAL 9006
- With membrane keyboard to control the electromagnetic or pneumatic brakes
- Low voltage 24 V for electromagnetic brakes
- Weight: 8.2 kg
- Manufacturer: Gebrüder Martin GmbH & Co. KG

#### 85-604-75-04

Tray 750 mm on multifunction rack



- Aluminum sheath with impact protection
- Dimensions: 750 x 450 mm
- External dimensions without mounting clamp: 795 x 450 x 36 mm
- Without standard rails
- Color: RAL 9006
- Load-bearing capacity: 80 kg
- Weight: 9.5 kg
- Manufacturer: Gebrüder Martin GmbH & Co. KG

---

#### 85-604-76-04

Tray 750 mm rail 25VA on multifunction rack

#### 85-604-83-04

Tray 750 mm rail 30AL on multifunction rack



- Aluminum sheath with impact protection and standard rail (25VA/30AL)
- Dimensions: 720 x 450 mm
- External dimensions without mounting clamp: 840 x 450 x 36 mm
- Color: RAL 9006
- Load-bearing capacity: 80 kg
- Weight: 10.3 kg
- Manufacturer: Gebrüder Martin GmbH & Co. KG

---

#### Article number available upon request

Tray 720 mm with operating function on multifunction rack



- Aluminum sheath with impact protection and standard rail (25VA/30AL)
- Dimensions: 720 x 450 mm
- External dimensions without mounting clamp: 840 x 520 x 36 mm
- Color: RAL 9006
- With membrane keyboard to control the electromagnetic or pneumatic brakes
- Low voltage 24 V for electromagnetic brakes
- Load-bearing capacity: 80 kg
- Weight: 10.5 kg
- Manufacturer: Gebrüder Martin GmbH & Co. KG

**85-604-25-04**

Double drawers



- Dimensions: 500 x 255 x 335 mm
- Fully extendable rails with damping and soft close function
- RAL 9006
- Load-bearing capacity: 10 kg
- Can only be mounted under the tray
- Manufacturer: Gebrüder Martin GmbH & Co. KG

---

**85-604-24-04**

Single drawer



- Dimensions: 500 x 130 x 335 mm
- Fully extendable rails with damping and closing function
- RAL 9006
- Load-bearing capacity: 10 kg
- Can only be mounted under the tray
- Manufacturer: Gebrüder Martin GmbH & Co. KG

---

**85-000-82-04**

Tray for standard rail



- Tray for standard rail 25 x 10 mm
- Material: stainless steel
- Weight: 1.0 kg
- Dimensions: 300 x 240 mm
- Load-bearing capacity: max. 10 kg
- Manufacturer: W. Krömker GmbH

## TFT suspension arms and keyboard trays

Digital surgical or image documentation along with live operations are becoming more and more important. The TFT suspension arms enable the mounting and ergonomic positioning of monitors of different sizes. Furthermore, the TFT arms guarantee an extremely large radius of action

### 85-606-41-04

TFT arm on multifunction rack, 7.5-13 kg



- Mounting on the multifunction rack
- Monitor holder: VESA 75/100
- Height-adjustable
- Load-bearing capacity: 7.5-13 kg
- Manufacturer: CIM med GmbH

### 85-606-42-04

TFT double arm on multifunction rack, 7.5-13 kg



- Mounting on the multifunction rack
- Monitor holder: VESA 75/100
- Height-adjustable
- Load-bearing capacity: 7.5-13 kg
- Manufacturer: CIM med GmbH

### 85-606-43-04

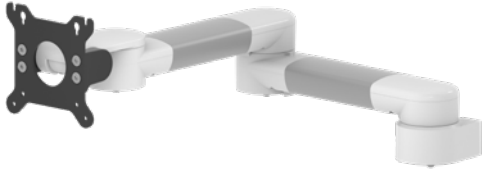
TFT arm on multifunction rack, 18 kg



- Mounting on the multifunction rack
- Monitor holder: VESA 75/100
- Horizontally adjustable
- Load-bearing capacity: 18 kg
- Manufacturer: CIM med GmbH

**85-606-44-04**

TFT double arm on multifunction rack, 8 kg

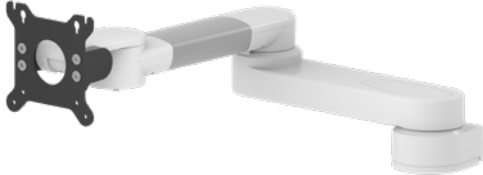


- Mounting on the multifunction rack
- Monitor holder: VESA 75/100
- Horizontally adjustable
- Load-bearing capacity: 8 kg
- Manufacturer: CIM med GmbH

---

**85-606-45-04**

TFT double arm on multifunction rack, 18 kg



- Mounting on the multifunction rack
- Monitor holder: VESA 75/100
- Horizontally adjustable
- Load-bearing capacity: 18 kg
- Manufacturer: CIM med GmbH

---

**85-606-46-04**

TFT double arm with keyboard holder on multifunction rack, 18 kg



- Mounting on the multifunction rack
- Monitor holder: VESA 75/100
- Horizontally adjustable
- Keyboard shelf: 580 x 200 mm
- Load-bearing capacity: 18 kg
- Manufacturer: CIM med GmbH



#### 85-606-48-04

Suspension arm with keyboard shelf on multifunction rack, 7.5-13 kg



- Mounting on the multifunction rack
- Height-adjustable
- Keyboard shelf: 480 x 220 mm
- Mouse pull-out left/right: 226 mm
- Manufacturer: CIM med GmbH

#### 85-606-47-04

Notebook shelf on multifunctional rack, 18 kg



- Mounting on the multifunction rack
- Horizontally adjustable
- Laptop / notebook shelf 360 x 280 mm
- Load-bearing capacity: 18 kg
- Manufacturer: CIM med GmbH

#### 85-609-64-04

Writing and keyboard shelf under tray



- Dimensions of working area: 461 x 453 mm
- External dimensions: 511 x 459 x 100 mm
- Can be swiveled by 10°
- Material of shelf: galvanized and painted sheet steel
- Material of guide rails: plastic
- Grounded, electrically isolated
- RAL 9006
- Mounting only possible under tray
- Manufacturer: Gebrüder Martin GmbH & Co. KG

## Lighting

Our examination and hospital bed lights make the daily check-ups much more pleasant for physicians and nursing staff. The lights are really impressive due to their attractive design and easy handling. In particular, they feature excellent illumination quality as a result of using state-of-the-art lighting technology.

### **89-701-03-04**

marLED® E1 examination light on standard rail



- LED examination lamp with flexible bracket, integrated power supply unit and power plug
- Optimal illumination due to high-quality LED technology
- Switching ON/OFF via easily accessible rocker switch on the joint of the flexible arm
- Manufacturer: Gebrüder Martin GmbH & Co. KG



- The marLED® E1 is mounted on the standard rail using a mounting clamp
- Total weight (marLED E1® + mounting clamp): 1.4 kg
- Manufacturer: Gebrüder Martin GmbH & Co. KG

### Configuration upon request

marLED® E3 in combination with the IDP suspension arm system



- Operating and examination light with an illuminance of 100,000 lux combines performance, efficiency, and design.
- Due to its innovative LED technology, it is really impressive on account of outstanding light output, excellent depth illumination, and brilliant color rendering.
- Manufacturer: Gebrüder Martin GmbH & Co. KG



- In conjunction with the IDP suspension arm system, the marLED® E3 examination light is the ideal combination of ceiling supply unit and lighting.
- The marLED® E3 is mounted on the upper pivot arm using an adapter.
- Frequent area of application: intensive care unit
- Manufacturer: Gebrüder Martin GmbH & Co. KG

## KLS Martin Group

### **KLS Martin Australia Pty Ltd.**

Sydney · Australia  
Tel. +61 2 9439 5316  
australia@klsmartin.com

### **KLS Martin do Brasil Ltda.**

São Paulo · Brazil  
Tel. +55 11 3554 2299  
brazil@klsmartin.com

### **KLS Martin Medical (Shanghai) International Trading Co., Ltd**

Shanghai · China  
Tel. +86 21 5820 6251  
info@klsmartin.com

### **KLS Martin India Pvt Ltd.**

Chennai · India  
Tel. +91 44 66 442 300  
india@klsmartin.com

### **KLS Martin Italia S.r.l.**

Milan · Italy  
Tel. +39 039 605 67 31  
info@klsmartin.com

### **KLS Martin Japan K.K.**

Tokyo · Japan  
Tel. +81 3 3814 1431  
info@klsmartin.com

### **KLS Martin SE Asia Sdn. Bhd.**

Penang · Malaysia  
Tel. +604 261 7060  
malaysia@klsmartin.com

### **KLS Martin de México, S.A. de C.V.**

Mexico City · Mexico  
Tel. +52 55 7572 0944  
mexico@klsmartin.com

### **KLS Martin Nederland B.V.**

Huizen · Netherlands  
Tel. +31 35 523 45 38  
infonl@klsmartin.com

### **KLS Martin SE & Co. KG**

Moscow · Russia  
Tel. +7 499 792 76 19  
russia@klsmartin.com

### **KLS Martin Taiwan Ltd.**

Taipei · Taiwan  
Tel. +886 2 2325 3169  
taiwan@klsmartin.com

### **KLS Martin SE & Co. KG**

Dubai · United Arab Emirates  
Tel. +971 4 454 16 55  
middleeast@klsmartin.com

### **KLS Martin UK Ltd.**

Reading · United Kingdom  
Tel. +44 118 467 1500  
info.uk@klsmartin.com

### **KLS Martin LP**

Jacksonville · Florida, USA  
Tel. +1 904 641 77 46  
usa@klsmartin.com

### **KLS Martin SE Asia Sdn. Bhd.**

Hanoi · Vietnam  
Tel. +49 7461 706-0  
info@klsmartin.com

### **KLS Martin SE & Co. KG**

#### **A company of the KLS Martin Group**

KLS Martin Platz 1 · 78532 Tuttlingen · Germany  
PO Box 60 · 78501 Tuttlingen · Germany  
Tel. +49 7461 706-0 · Fax +49 7461 706-193  
info@klsmartin.com · www.klsmartin.com