



IPS Implants®

Epithesis Base





Oral and maxillofacial surgery is our passion! It is our policy to continue enhancing this field in collaboration with our customers. Every day we work on developing innovative products and services which meet the highest demands on quality, and which contribute to the wellbeing of the patient.

IPS Implants® Epithesis Base

Custom-made framework structure for fixating epitheses

IPS® is ideal for solutions custom-made to the patient by a simple and efficient process – from planning to the functional implant.

We supply IPS Gate®, a platform that guides surgeons and users reliably and efficiently through the process of inquiring about, planning, and completing custom-made products. The intuitive concept offers the user maximum mobility, flexibility, and functionality. With the “HTTPS” standard, IPS Gate® ensures encrypted data transmission, which is additionally certified by the TÜV Süd seal.

Custom-made implants, planning aids, and anatomical models are made from various materials using state-of-the-art fabrication technologies. Thanks to computer-based planning and functionalized custom-made implants, pre-operative planning can be implemented in the OR with unprecedented precision.

The resulting advantages for patients are reduced complication rates, improved esthetic and functional results, reduced surgical time and faster rehabilitation.

Feature, function and benefit



In everyday interactions with the public, the face is the most important visible feature. A trauma or reconstruction can lead to the loss of facial structures. An epithesis can restore the afflicted patient's original appearance to a large extent.

IPS Implants® Epithesis Base is a framework implant with integrated attachment points for screw-in magnets to which an epithesis can be fixated. Anchoring in the bone, the framework structure, and the position of the magnet attachments can be defined individually during planning.

The implant is manufactured using the laser melting process in the 3D technique. Depending on the case, intraoperative drill and marking guides are available for optimal implant placement.

IPS Implants® Epithesis Base

3D-printed titanium implant

- Alloy: Ti6Al4V
- Screw system: 1.5 mm
- Material thickness: 1.5 mm
- Polished surface around the soft tissue penetration site and uncovered areas
- Backward planning:
Flexible positioning of the epithesis magnet, irrespective of the bone situation
 - Epithesis restoration
 - Magnet position and angle
 - Framework implant

Interface magnet/implant

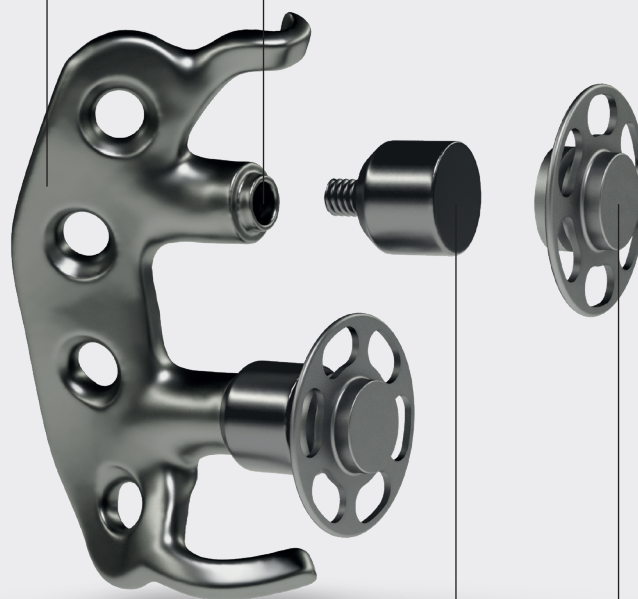
- External hex 4.0 mm implant platform RP (regular platform)
- M2 thread

Epithesis magnet

- For integration in the epithesis

Magnetic abutment

- For screw-retention in the framework implant





Orbita

Framework structure attached supraorbitally to the orbit roof with three attachment points for an orbital epithesis.



Midface/nose

Framework structures attached to the maxilla and zygomatic bone to accommodate a midfacial epithesis.



Nose

Bilateral piriform aperture-attached framework structure for accommodating a nasal epithesis with two magnets.



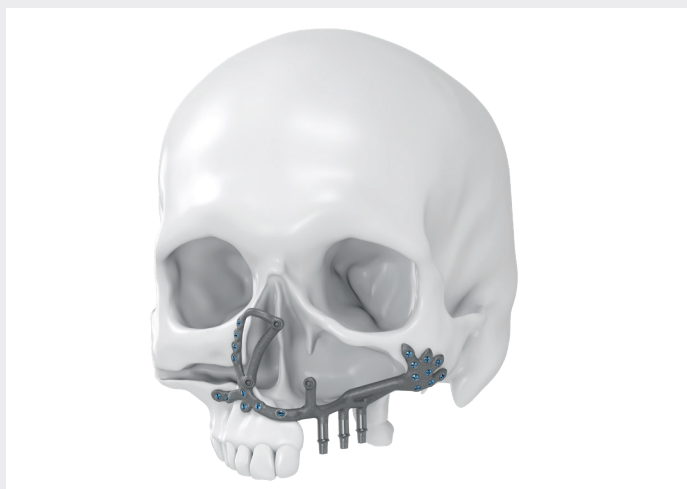
Nose

Bilateral piriform aperture-attached framework structures for accommodating a nasal epithesis with four magnets.



Ear

Framework structure attached to the temporal bone around the auditory canal with three attachment points for an ear epithesis.



Combination

Restoration of the left maxilla with IPS Implants® Preprosthetic and IPS Implants® Epithesis Base with three attachment points for a nasal epithesis.

FAQs



Which data are required for planning?

The following apply: IPS Implants® Scan protocol Cranium | Midface | Midface Orbita | Mandible | Mandible Reconstruction | Distraction 90-249-XX-04.

Use of possible magnetic abutments:*

■ Steco (Germany)

Titanmagnetics Insert X-Line, diameter 4.8 mm, 3.5 mm height for the Brånemark Regular Platform (RP) implant (M2-thread, gradient 0.4 mm)
Article number I.02.01.X350

■ Technovent (United Kingdom)

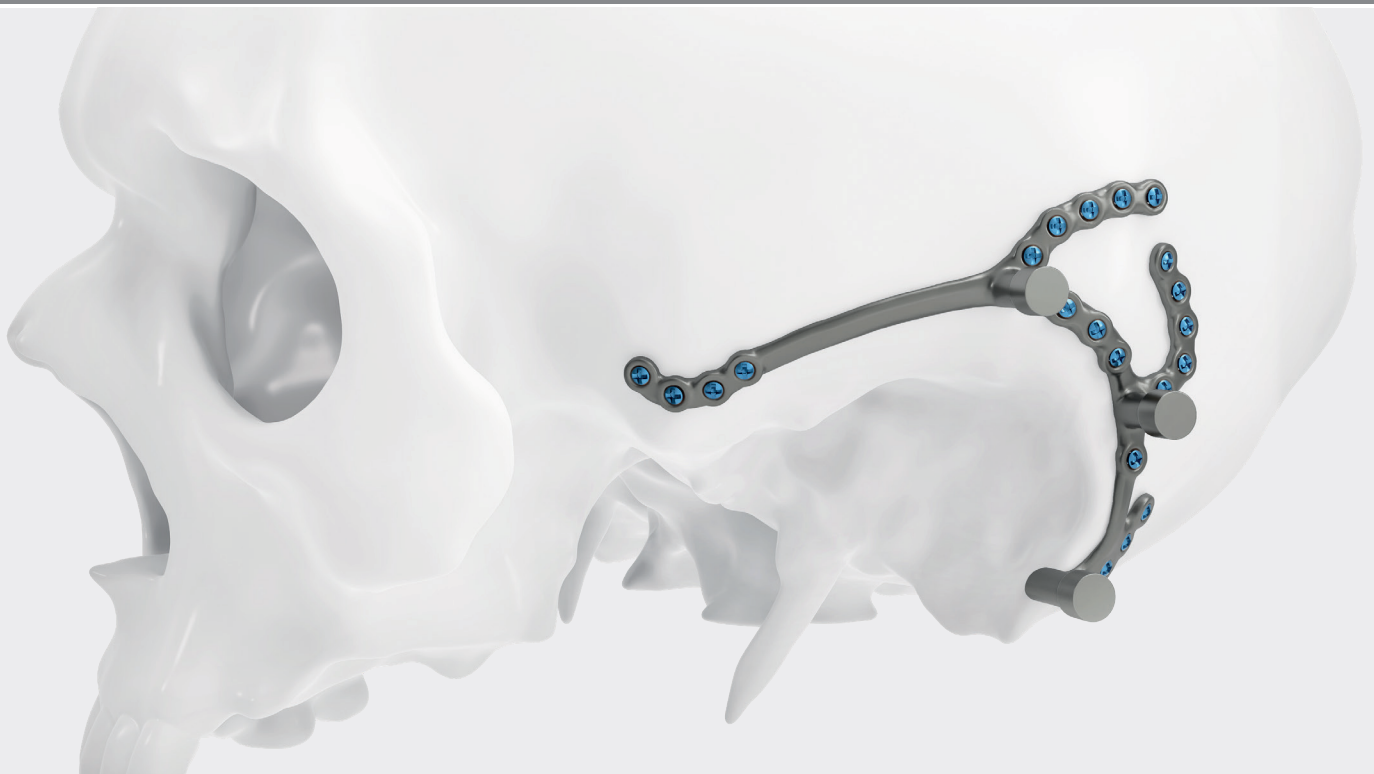
- Mini Magnabutment: 3.6 mm height, 4.4 mm diameter
Article number B-MA1-S
- Maxi Magnabutment: 3.6 mm height, 5.1 mm diameter
Article number B-MA2-S

Use of possible epithesis magnets:*

■ Steco (Germany)

X-Line epithesis magnet, diameter 4.8 mm, height 2.65 mm, universal with collar and retention ring
Article number U.00.02.X265K

* All information subject to changes by the manufacturer



Can I purchase accessories and magnets directly from KLS Martin?

No, these articles are not part of the KLS Martin portfolio and can be ordered from the supplier of your choice.

Which osteosynthesis accessories are required for surgical procedures in addition to IPS Implants® and/or the supplied marking guides?

- Sufficient number of KLS Martin osteosynthesis screws in the planned diameters (1.5 mm) for fixating the implant and marking guides.
- In the case of unknown or reduced bone quality, the use of emergency screws (Ø 1.8 mm) is recommended.
- A screwdriver that fits the planned osteosynthesis screws.
- If no Drill-free screws are used: a twist drill suitable for the planned osteosynthesis screws.

Fields of use

Fields of use

- Reconstruction of bone structures after destruction/deformation by, for example, tumors, ulcers, cysts, traumas, infections or rejection reactions
- Reconstruction in cases of congenital deformations
- Orthognathic surgeries
- Cerebrocranial traumata with elevated intracranial pressure
- Bone augmentation
- Cosmetic surgery

The IPS® product range



IPS CaseDesigner®

The IPS CaseDesigner® makes virtual 3D surgical planning easier and faster than ever before.

With this flexible software tool, orthognathic procedures can be efficiently and reliably planned, simulated, and custom-made for treatment in the OR.



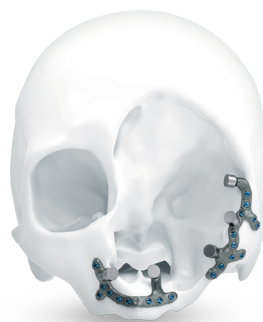
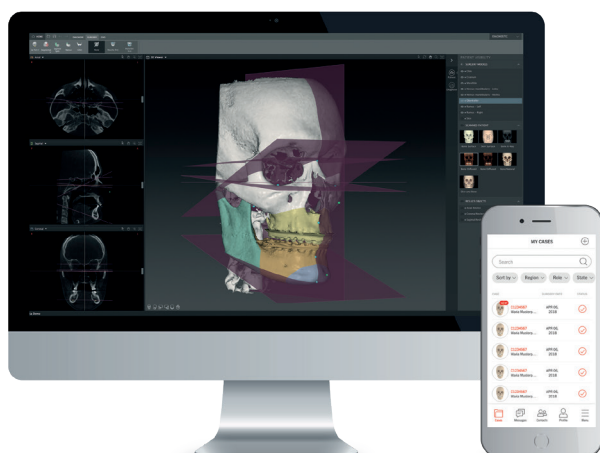
IPS Gate®

The web-based platform and app guide surgeons and users reliably and efficiently through the process of inquiry, planning, and completing custom-made products. With the “HTTPS” standard, IPS Gate® guarantees encrypted data transmission, which is additionally certified by the TÜV Süd seal.



IPS Implants®

Custom-made implants, planning aids, and anatomical models are made from various materials using state-of-the-art fabrication technologies. Thanks to computer-based planning and functionalized custom-made implants, preoperative planning can be implemented in the OR with unprecedented precision.



KLS Martin Group

KLS Martin Australia Pty Ltd.

Sydney · Australia
Tel. +61 2 9439 5316
australia@klsmartin.com

KLS Martin do Brasil Ltda.

São Paulo · Brazil
Tel. +55 11 3554 2299
brazil@klsmartin.com

KLS Martin Medical (Shanghai) International Trading Co., Ltd

Shanghai · China
Tel. +86 21 5820 6251
info@klsmartin.com

KLS Martin India Pvt Ltd.

Chennai · India
Tel. +91 44 66 442 300
india@klsmartin.com

KLS Martin Italia S.r.l.

Milan · Italy
Tel. +39 039 605 67 31
info@klsmartin.com

KLS Martin Japan K.K.

Tokyo · Japan
Tel. +81 3 6410 8471
japan@klsmartin.com

KLS Martin SE Asia Sdn. Bhd.

Penang · Malaysia
Tel. +604 261 7060
malaysia@klsmartin.com

KLS Martin de México, S.A. de C.V.

Mexico City · Mexico
Tel. +52 55 7572 0944
mexico@klsmartin.com

KLS Martin Nederland B.V.

Huizen · Netherlands
Tel. +31 35 523 45 38
info@klsmartin.com

KLS Martin SE & Co. KG

Moscow · Russia
Tel. +7 499 792 76 19
russia@klsmartin.com

KLS Martin Taiwan Ltd.

Taipei · Taiwan
Tel. +886 2 2325 3169
taiwan@klsmartin.com

KLS Martin SE & Co. KG

Dubai · United Arab Emirates
Tel. +971 4 454 16 55
middleeast@klsmartin.com

KLS Martin UK Ltd.

Reading · United Kingdom
Tel. +44 118 467 1500
info.uk@klsmartin.com

KLS Martin LP

Jacksonville · Florida, USA
Tel. +1 904 641 77 46
usa@klsmartin.com

KLS Martin SE Asia Sdn. Bhd.

Hanoi · Vietnam
Tel. +49 7461 706-0
vietnam@klsmartin.com

KLS Martin SE & Co. KG

A company of the KLS Martin Group

KLS Martin Platz 1 · 78532 Tuttlingen · Germany
PO Box 60 · 78501 Tuttlingen · Germany
Tel. +49 7461 706-0 · Fax +49 7461 706-193
info@klsmartin.com · www.klsmartin.com